

Doc 9137-AN/898
Part 9

AIRPORT SERVICES MANUAL



PART 9

AIRPORT MAINTENANCE PRACTICES

FIRST EDITION — 1984

*Approved by the Secretary General
and published under his authority*

INTERNATIONAL CIVIL AVIATION ORGANIZATION

Airport Services Manual

(Doc 9137-AN/898)

Part 9 Airport Maintenance Practices

First Edition — 1984



Foreword

This manual consolidates in one document a review of the maintenance practices required at an airport to maintain the safety, efficiency and regularity of aircraft operations. *It is only concerned with those facilities which are normally the responsibility of the airport authority.* In other words, maintenance of such facilities as radio navigational aids and meteorological equipment is not discussed.

Proper maintenance of airport facilities is important both for the safe operation of aircraft and extending the life of the facilities. Nevertheless, maintenance is frequently overlooked or reduced when establishing budgets for airports. It is hoped that this manual will establish the proper position of maintenance in the over-all airport programme.

Differences between the facilities provided at an airport, differences in the local environmental conditions and differences in use make it impossible to name specific

maintenance requirements. The manual attempts to overcome this by identifying the various types of maintenance required for airport facilities. It remains for each airport authority to decide if a particular maintenance check is appropriate for its airport and to establish the appropriate maintenance schedule.

This manual was prepared by the ICAO Secretariat with the assistance of the German Airports Association (ADV). It is important to note that the material contained in the manual may not necessarily reflect either the views of the ADV or the official position of ICAO. It is intended that the manual will be kept up to date. Future editions will be improved on the basis of experience gained and of comments and suggestions received from the users of this manual. *Therefore, readers are invited to give their views, comments and suggestions on this edition.* These should be directed to the Secretary General of ICAO.

Table of Contents

	<i>Page</i>		<i>Page</i>
Chapter 1. General.....	1	Transformer stations for electric power supply	11
1.1 Aim of the manual	1	Relay and switch cabinets (including switch cabinets in sub-stations)	11
1.2 Use of the manual	1	Control cables, monitoring units, control desk	11
1.3 Organization of the manual	1	Secondary power supplies (generators) ..	12
1.4 Purpose of airport maintenance	2	Fixed 400 Hz ground power supplies ..	12
1.5 Organization of airport maintenance.....	2	Apron floodlighting.....	12
Chapter 2. Maintenance of Visual Aids	4	Chapter 4. Maintenance of Pavements.....	13
2.1 Introduction	4	4.1 Surface repair	13
2.2 Personnel	4	General	13
2.3 Spare parts	4	Portland cement concrete pavements ..	13
2.4 As-built drawings	4	Bituminous pavements	13
2.5 Light maintenance schedule	4	4.2 Repair of joints and cracks.....	15
General	4	Joints in concrete pavements	15
Basic maintenance programme for approach, runway and taxiway lighting systems	5	Concrete joint maintenance	15
Additional maintenance programme for special types of lights	5	Joints in bituminous pavements	15
Maintenance programme for other airport lights	6	Cracks in concrete pavements	16
Docking guidance systems	6	Cracks in bituminous pavements	16
2.6 Light maintenance procedures	6	4.3 Repair of pavement edge damage	16
General hints for the maintenance of lights	6	General	16
Cleaning procedures for lights.....	7	Edge repair	18
Light measurement	7	Corner repair	18
Lamp replacement	8	4.4 Repair of other pavement surface deficiencies	18
Removal of water	8	4.5 Sweeping	18
2.7 Signs	8	Purpose of sweeping	18
2.8 Markings.....	9	Surface monitoring	19
Chapter 3. Maintenance of Airport Electrical Systems	10	Cleaning of surfaces	19
3.1 General	10	4.6 Cleaning of contaminants	19
3.2 Personnel	10	Purpose of cleaning pavements.....	19
3.3 Schedule of maintenance	10	Removal of rubber deposits.....	21
Power cables and distributors in field .	10	Fuel and oil removal.....	21
Transformers and regulators (including standby units)	10	4.7 Removal of snow and ice	22
		General	22
		Snow plan and snow committee	22
		Responsibilities	22
		Procedures for interrupting air traffic .	22
		Procedures for snow removal	22
		Surface de-icing	27
		Surface anti-icing.....	27
		Personnel training	27

	<i>Page</i>		<i>Page</i>
Chapter 5. Drainage.....	28	Chapter 8. Maintenance of Equipment and Vehicles.....	39
5.1 General	28	8.1 General	39
Layout	28	8.2 Organization of vehicle maintenance.....	39
5.2 Cleaning of slot drains.....	28	8.3 Schedule of vehicle maintenance	39
5.3 Drain pipes or culverts between surfaces and collector basins	28	8.4 Workshops	41
5.4 Oil and fuel separators.....	31		
5.5 Water hydrants	31		
Chapter 6. Maintenance of Unpaved Areas	32	Chapter 9. Buildings	42
6.1 General	32	9.1 General	42
6.2 Maintenance of green areas within strips .	32	9.2 Lighting and electric equipment	42
6.3 Maintenance of grass on unpaved runways and taxiways	32	9.3 Communication facilities	43
6.4 Maintenance of green areas outside strips	33	9.4 Air conditioning system	43
6.5 Equipment for maintenance of grass.....	33	9.5 Heating facilities	44
6.6 Treatment of cut grass.....	35	9.6 Automatic doors	44
Chapter 7. Removal of Disabled Aircraft	36	9.7 Baggage conveyor belts (fixed installations)	44
7.1 Removal plan.....	36	9.8 Baggage claim units	45
7.2 Personnel training	36	9.9 Passenger boarding bridges	45
7.3 Storage of equipment	36	9.10 People lifts (elevators)	45
7.4 Maintenance of removal equipment.....	36	9.11 People movers (escalators, etc.)	45
		9.12 Fixed fire protection installations.....	45

Chapter 1

General

1.1 AIM OF THE MANUAL

1.1.1 This publication is directed at authorities responsible for the operation of airports and/or individual facilities on airports other than meteorological or electronic navigation aids. It is compiled in a manner suitable for those who have responsibility for the operational safety of airport facilities and equipment, and for ensuring the undisturbed operation of air traffic on the ground. Reference is made to specifications and other relevant material in ICAO documents which require authorities to take care of special tasks in the interest of safety and regularity of air transport.

1.1.2 While this manual addresses maintenance of airport components regardless of the airport's size or role, the description of tasks has been restricted to the maintenance of those facilities which are unique to or typical for airports. As airports are comparable to other kinds of industrial plants, many other maintenance functions have to be carried out to ensure serviceability and function of buildings, facilities and equipment. This manual does not deal with any of these normal industrial maintenance tasks except in areas where a functional failure would impair safety or regularity of aircraft operation and/or passenger handling.

1.2 USE OF THE MANUAL

1.2.1 The manual is intended to give guidance to authorities on planning and conducting maintenance work on an airport. The guidance has been developed from various airport operators' practices and reflects long-term experience in the field of airport operation. Since wear and sensitivity of any technical component depend on material, utilization, age, climate and other environmental conditions, none of the recommendations on the type and intervals of maintenance action described in this manual should be considered a specification. Local needs, local experience, recommendations of manufacturers of components and — if relevant — national or local rules

should govern the plan on what and when maintenance tasks are to be carried out.

1.2.2 The recommendations compiled in this manual more or less describe the air carrier airports' needs for maintenance. For commuter-type and general aviation airports less extensive maintenance will suffice, since neither their type of traffic nor the economic situation of such airports generally warrant as high a level of maintenance, except for runway surfaces and — if provided — visual aids. Nevertheless, the information given in this manual may also guide operators of commuter-type and general aviation airports in setting up maintenance programmes tailored to the needs of their facilities.

1.3 ORGANIZATION OF THE MANUAL

1.3.1 This manual is organized in such a way as to cover primarily the airport maintenance tasks required for maintaining safe aircraft operation during the landing, taxi and take-off phases. In addition, some of the maintenance tasks supporting the airport efficiency have been included.

1.3.2 The requirements for safety reasons dominate the first part of the manual's contents, wherein the maintenance of visual aids, of electrical infrastructure, of pavements, of unpaved areas and of the drainage system is dealt with. Availability of suitable equipment is the tool for complying with the maintenance requirements of fixed facilities. Therefore, the maintenance of vehicles and equipment has been included as an elementary part of the over-all airport maintenance task. Aircraft removal equipment represents a very special type of airport equipment. The material in this manual is complementary to the *Airport Services Manual*, Part 5, which deals with removal procedures.

1.3.3 Chapter 9 concerns one aspect of the large field of maintenance tasks for the serviceability of handling facilities on an airport, i.e. the maintenance of some of the technical passenger handling facilities in the terminal building.

1.4 PURPOSE OF AIRPORT MAINTENANCE

1.4.1 An airport, being an important part of the aeronautical infrastructure, has to meet high safety standards. The required level of safety can only be achieved by proper maintenance of all the elements composing an airport.

1.4.2 Maintenance includes measures to keep or restore the operational function as well as measures to check and to evaluate the present function of an element. The basic components of maintenance are:

- inspection;
- servicing and overhaul; and
- repair.

1.4.3 Inspection comprises all measures to check and evaluate the operating condition including spontaneous and scheduled checks. Scheduled checks are carried out in accordance with a plan specifying the preparation of the check, the sort of check, the report on the result and the evaluation of the results. From the evaluations the operator decides whether or not extra servicing or even repair has to be undertaken.

1.4.4 Servicing and overhaul comprise all measures to maintain or return a facility or device to its required operating condition. These measures should be carried out according to a plan specifying the time for the service, the nature of the service and the report of compliance.

1.4.5 Whenever inspection or servicing discovers deficiencies, repair measures have to be planned and carried out as soon as practicable. Repair can comprise minor or major work as, for instance, runway surface treatment with consequential traffic interruption.

1.4.6 Efficiency and safety of operation can only be expected from facilities that are in good operational condition. The maintenance of facilities, i.e. the sum of all measures described above, is the prerequisite to such a condition. Furthermore, maintenance minimizes wear and tear, thus controlling and extending considerably the life span of technical components. In this respect maintenance becomes an economic requirement to keep investment and capital costs for the aeronautical infrastructure within acceptable limits.

1.5 ORGANIZATION OF AIRPORT MAINTENANCE

1.5.1 Complete assessment of all parts of the airport is the basic requirement of the maintenance organization.

Buildings, pavement sections and unpaved areas in between have to be numbered, as well as all machinery, technical and mechanical inventory, including vehicles. The numbers define the objects, for which the maintenance requirements can be specified individually. These requirements should be recorded on cards or computer tapes.

1.5.2 Maintenance programmes will be developed from experience with the needs of the different objects or in accordance with the manufacturer's advice. For economic reasons and in order to split responsibility equitably, a precise breakdown of the total work by fields of maintenance is recommended (e.g. for a building — roofs, walls, (including doors and windows), machinery and mechanical facilities and electric installations). Each team or expert responsible for one special task can then work in accordance with a systematic work programme that will achieve optimum efficiency.

1.5.3 A fundamental task of the maintenance organization is to translate the maintenance requirements into man/hours and monetary value. This evaluation is the basis of staffing budget planning. It is, furthermore, a tool for decision-making when contracting third parties for maintenance tasks instead of employing extra personnel.

1.5.4 All maintenance programmes should be "screened" once a year, preferably at the time of budget planning. It is useful not only to rely on recorded data but to inspect the condition of all major objects at that time. In contrast to machines, whose operating hours give a good measure of wear, the deterioration of buildings is more dependent on weathering, utilization under heavy load, concealed construction deficiencies or other unpredictable sources of damage.

1.5.5 Updated maintenance programmes will allow:

- appropriate staffing;
- compliance with the recorded maintenance needs; and
- flexibility as to the timing of action when unexpected circumstances have affected the planned work schedule.

When management checks the work carried out against scheduled tasks, it gains thereby full control of the maintenance progress and budget. Compliance reports are the feedback and have to be recorded, as well as observations on any reported deficiencies.

1.5.6 Computer assistance can be helpful and economical if the volume of maintenance is high. The computer is particularly capable of controlling preventive maintenance tasks typical of electrical systems and machines. Furthermore, evaluation of the aging of inventory and of maintenance budget control can be facilitated by suitable

computer programmes. The computer is less effective for maintenance control of buildings and pavements, where repair work upon notice will always prevail.

1.5.7 To maintain the operation of the technical facilities at an airport, a sufficient number of technicians must be available during airport operating hours so that deficiencies can be overcome immediately. The team available should comprise, as appropriate, engineers, automotive technicians, locksmiths, tinsmiths, air conditioning and heating technicians, electricians and HF-technicians. If control/monitoring centres for technical facilities exist, they should be manned permanently.

1.5.8 This standard team can be reduced outside the operating hours to such a degree that vital components necessary for the technical function of the airport (e.g. electrical circuits, heating or air conditioning, telephone system etc.) can be kept serviceable and additional technicians can be called upon to arrive promptly in cases of serious disturbance. In all other cases the reduced maintenance team has to take care of provisional repair work and will report on maintenance needs to the standard team at the beginning of their duty hours.

1.5.9 The standard team need not be capable of doing all of the airport's maintenance tasks. The airport authority may use contractors to carry out those maintenance tasks which can be easily organized on a time schedule. However, apart from the normal maintenance tasks (which according to the experience of the airport authority the maintenance staff can fully take care of) special tasks may occur unexpectedly due to the very nature of air transport and its sensitivity to external impacts. Reasons for extra maintenance work can be:

- snowfall or ice forming on operational areas;
- sandstorm;
- rain, heavy thunderstorm with consequential damage;
- aircraft accidents or incidents; and
- technical or criminal emergencies.

1.5.10 To cope with these inevitable work requirements and especially in view of the airport emergency plan, the airport authority will have to have a certain reserve of skilled craftsmen employed. This requirement reduces the scope for contract maintenance by third party companies.

1.5.11 To ensure the whole airport's smooth operation the provision of workshops at the airport is necessary from both an operational and economic standpoint. The selection of the kinds of workshops depends largely on the local situation, i.e. size of airport, traffic volume, ownership of facilities and equipment, share of work between airport users (airlines) and airport operator etc. Individual solutions for the provision of workshops have to take into account:

- local maintenance requirements;
- compliance with the airport emergency plan; and
- economic aims.

The economic aims may involve performing other business in the airport's workshops, for example, aircraft maintenance for home base carriers and/or general aviation. Alternatively, economic needs can require that outside workshops or craftsmen be used for maintenance work and even emergency assistance. A sound balance between the capacity of the airport's basic maintenance workforce and their system to comply with peak and emergency workloads is important for an economic airport operation.

Chapter 2

Maintenance of Visual Aids

2.1 INTRODUCTION

2.1.1 The basic purpose of visual aid systems is to aid in the safe operation of aircraft. Therefore, the highest standards of maintenance are required. Once a system has been installed, its usefulness is dependent on its serviceability which in turn depends upon the effectiveness of the maintenance work carried out. Annex 14, Chapter 1 defines a light to have failed when its light output falls below 50 per cent of that specified for a new light. The causes for the loss in light output can be contaminants outside and inside the light unit, and degradation of the lamp and optical system due to aging. The light can and should be restored to its original condition by cleaning or replacing the lamp and any parts which have apparently become degraded. For this purpose it is essential to establish a comprehensive routine maintenance system for servicing lights and other equipment so that the installation complies with the specified requirements. Reference is made to Annex 14, Chapter 9.

2.2 PERSONNEL

2.2.1 The task of maintaining lighting aids should be entrusted only to reliable and skilled electricians who have had experience with high voltage, series circuits and lighting. These individuals should be present or on call during the operating hours of the airport to correct any deficiencies that might develop. Training programmes should be established to maintain the competence of maintenance personnel and to keep them abreast of new developments.

2.3 SPARE PARTS

2.3.1 An adequate stock of spare parts should be available. The level of stock will vary depending on the time required to re-supply a particular item and its shelf life.

2.4 AS-BUILT DRAWINGS

2.4.1 A set of as-built drawings should be kept readily available. These drawings must be kept up to date and any changes at site should be reflected immediately on these drawings. The completeness and the accuracy of all circuit diagrams, drawings and descriptions should be checked at least annually.

2.5 LIGHT MAINTENANCE SCHEDULE

General

2.5.1 When servicing lights the instructions of the appropriate authority and recommendations of the equipment manufacturer should be followed to ensure the required service standard. Service records showing maintenance schedules recommended by the manufacturer or local standards should be prepared for each piece of equipment. These can be arranged in a dated reminder file to make sure all equipment is serviced regularly. This record should have space to enter observations, measurements and initials of the servicing individual. If local conditions indicate a change in time interval of servicing to be desirable then the schedule can be altered in consultation with the equipment manufacturer.

2.5.2 The frequency at which routine inspection, cleaning and servicing are to be performed will vary according to the type of equipment, its location and usage. A maintenance programme must be drawn up for each individual airport based on past experience and its aim should be to achieve the required service standard. The following schedules are presented as guidance material in establishing a preventive maintenance programme. More frequent checks may be necessary for the lights serving precision approach category II and III runways. The time schedules shown should not take precedence over manufacturers' instructions or be applied to similar equipment not mentioned. Each check should be followed by appropriate corrective action.

Basic maintenance programme for approach, runway and taxiway lighting systems

2.5.3 Maintenance for all types of approach, runway and taxiway lights should include checking and, if necessary, taking the indicated corrective action, as follows:

Daily:

- system for burnt-out lamps; replacing burnt-out lamps
- system for gross misalignment (if applicable); adjusting
- control equipment for proper operation on each brightness step (if applicable); correcting or repairing malfunctions
- glass for breakage; replacing broken parts.

Annually:

- fasteners of each light unit; tightening
- lights for corrosion; painting or replacing rusted parts
- reflector of each light unit (if applicable); cleaning or replacing
- glass of each light; cleaning or replacing
- lamps of the whole system; replacing of the unserviceable lamps or entire system (see 2.6.18)
- elevation setting (if applicable); adjusting
- horizontal alignment; adjusting
- plug connexions for cleanness and faultless contact; cleaning or replacing of dirty parts
- light fittings and their supporting structure (if existing) for adequacy of fastening and for corrosion and rust; tightening fasteners; painting or spraying
- general condition of the whole system, and recording results.

Unscheduled:

- elevation setting and the horizontal alignment (if applicable) of the light units after severe storms and snowfalls; adjusting
- light units for obstruction by grass or snow, etc. (not applicable for inset lights); removing any obstacles found.

Additional maintenance programme for special types of lights

2.5.4 In addition to the maintenance programme specified in 2.5.3, the following should be carried out for visual approach slope indicators, runway threshold and end lights, and inset lights.

2.5.5 Visual approach slope indicator maintenance should include checking and, if necessary, taking the indicated corrective action, as follows:

Twice monthly:

- elevation setting (vertical angle) of the light units; adjusting
- spreader glasses, filters and lamps for cleanness; cleaning

Annually:

- system from the air, and recording results; adjusting and replacing lamps
- supporting structure and the foundation of each unit; repairing.

2.5.6 Runway threshold and runway end light maintenance should include checking and, if necessary, taking the indicated corrective action as follows:

Twice weekly:

- fasteners of the lights; tightening
- glass of each light for wear and tear; replacing.

2.5.7 Inset lights (runway centre line lights, touch-down zone lights, taxiway centre line lights, stop bar lights) maintenance should include checking and, if necessary, taking the indicated corrective action, as follows:

Daily:

- lenses for cleanness; cleaning

Twice weekly (not applicable to taxiway and stop bar lights):

- light output of lights within 900 m from each threshold including measuring and recording the results; cleaning of the lenses
- top parts of lights within 900 m from each threshold; replacing.

Quarterly (not applicable to taxiway and stop bar lights):

- light output of all lights within the system including measuring and recording the results; cleaning of the lenses
- top parts of the lights; replacing.

Semi-annually (not applicable to taxiway and stop bar lights):

- lights for cleanness inside and out; cleaning
- lights for moisture; drying
- electrical connexions of the lights; tightening; spraying with contact agent
- alignment of lights; adjusting.

Annually:

- prisms and filters; cleaning or replacing
- sealing compound; resealing.

Unscheduled:

- top parts of the lights two to four weeks after replacement; tightening.

Maintenance programme for other airport lights

2.5.8 Other airport lights include, for example, airport beacons, obstacle lights and wind direction indicators. These normally need less maintenance than approach, runway or taxiway lighting systems. Their maintenance should include checking and, if necessary, taking the indicated corrective action, as follows:

Daily:

- lamps; replacing if necessary
- control equipment for proper operation (not applicable in the case of obstacle lights); correcting or repairing
- fabric of the wind cone; repairing or replacing.

Semi-annually (only for airport beacon):

- power supply (brushes and slip-rings); cleaning or replacing
- electrical connexions; tightening
- rotating parts; fastening.

Annually:

- optical system of the airport beacon
- glasses and the gaskets of obstacle lights; cleaning or replacing
- function of the flashing relays and of the twilight switches of the obstacle lights; cleaning, repairing or replacing
- power supply and the lighting of the wind direction indicator; repairing or replacing
- electrical connexions; tightening; spraying with contact agent
- fasteners of obstacle lights
- structure and the fasteners of the wind direction indicator; tightening or repairing the structure
- lights for corrosion; painting
- colour of the fabric cone of the wind direction indicator; replacing.
- location of obstacle lights for easy access for maintenance; arranging of change of location if required and possible.

Unscheduled:

- wind direction indicator after severe storms; repairing.

Docking guidance systems

2.5.9 Maintenance programmes for various types of aircraft docking guidance systems are provided at airports and it is very difficult to describe a generally applicable

maintenance programme for these very different systems. Principal requirements to be checked and maintenance action to be taken, if necessary, include:

Daily:

- system for over-all operation; repairing
- lamps; replacing burnt-out lamps.

Semi-annually:

- alignment of the system; adjusting.

Annually:

- electrical connexions (if provided) for corrosion, wear and tear; cleaning, tightening and replacing
- function of relays (if provided); cleaning or replacing
- structure of the system and the function of all mechanical parts; repairing
- system for cleanness and moisture; cleaning and drying.

2.6 LIGHT MAINTENANCE PROCEDURES*General hints for maintenance of lights*

2.6.1 For reasons of efficiency the maintenance of lights should, as far as practicable, be carried out indoors. Inconveniences of working out of doors, such as heat, cold, precipitation and aircraft noise can be avoided and traffic restrictions or interruptions will be reduced to a minimum. The quality of service will also be higher in workshops than out of doors. This is particularly applicable when, in the interest of unrestricted traffic flow during day hours, the work has to be carried out during the night.

2.6.2 The maintenance procedure commonly used comprises two steps:

- removal of defective lights and immediate replacement by new or repaired ones
- servicing and overhaul of deficient lights in the workshop where all required tools, measuring and adjusting equipment are available.

2.6.3 This procedure has proven to be practical, particularly for the maintenance of inset lights. Provision of a sufficient number of stored spare lights is a prerequisite. The number of spare parts depends on the over-all requirement of the airport and the experience with the sensitivity to damage of the various types of lights on the airport. It is useful to select lights which are designed to permit removal and installation within a short time, without the use of very sophisticated technical equipment.

Furthermore, all mechanical and optical parts of the light should be incorporated in the removable part.

Cleaning procedures for lights

2.6.4 The type and degree of contamination of the various lights on an airport will be different. While elevated approach and edge lights are normally contaminated by weather effects only (dust carried by wind and rain), more severe contamination can be observed on inset lights, particularly on runways. Rubber deposits from tires on touchdown and exhaust from engine reverse thrust procedures create firmly sticking deposits on the exterior glassware of lights. The very different degree of contamination must be reflected in the maintenance schedule of different categories of lights or sections in the runway/taxiway system.

2.6.5 When cleaning the glassware of lights, the manufacturer's recommendations should be observed. Normally, cleaning is accomplished by washing the glassware with a cleansing mixture of water and a special solvent that will neither affect the sealing material nor produce a residual film on the glass. The solvent must be given sufficient time to dissolve the deposits. If necessary, rubber spots may be scraped off by using plastic tools or powder before using the solvent. Other mechanical aids for cleaning may be sponges, cloths, hand brushes or electric rotating brushes. The cleaning technique and the materials used should not scratch or groove the glass surface nor damage the sealing material.

2.6.6 Dry cleaning of glassware should be avoided. However, if cleaning becomes necessary for some reason, no sand or other abrasive material should be used. In such cases cleaning can be done by using clean ground-up walnut or pecan shells and dry compressed air. Special treatment can normally be avoided by following a maintenance schedule with wet cleaning at suitable intervals.

2.6.7 For cleaning light fittings on site special maintenance vehicles equipped with air compressors, vacuum cleaners and solvent tanks should be used. A low working seat at the rear or front, or an opening in the bottom of the maintenance vehicle facilitates the work considerably. In some cases, these vehicles can carry the required tools for all types of maintenance work, including the removal of old lights and the installation of new ones.

2.6.8 Thorough cleaning of the interior of the lights to remove mud, moisture or rust should be carried out in workshops. Only minor contaminants, such as dust, should be removed on site.

Light measurement

2.6.9 The light output will diminish with the lapse of time due to lamp aging. Contamination of reflector and lens will result in a further degradation of light output. According to Annex 14 a light is considered to have failed when its output is less than 50 per cent of the required intensity. For practical reasons replacement of a light is recommended when its output falls below 70 per cent of that specified for a new light.

2.6.10 Light measurements should be carried out regularly to detect early light output reduction. Appropriate equipment for both field and bench measurement of light output is available. The equipment produced by light manufacturers does not, however, indicate the absolute intensity values but provide ratios between measured and original light intensities of each individual type.

2.6.11 Field measurements are particularly necessary for inset lights. Wheel loads on inset lights may frequently cause damage. One type of measuring equipment offered by the light manufacturers for field use consists of a photocell and a microammeter. Such measuring devices are placed over the light fitting and the meter reading observed is compared with the calibration value. Before measuring, the lights should be cleaned and switched to the highest available intensity setting.

2.6.12 Light measurements can also be made by using a photographic 1° spotmeter, which is not placed on the light casing directly, but moved vertically and horizontally through the light beam at a fixed distance. The intensity is checked by comparison with the results of a calibration test with a new light.

2.6.13 The measuring procedures described above are quite time-consuming. With the special device each measurement will take about 2 minutes. Often a much faster visual observation carried out by experienced personnel will achieve comparable results for discovering and reporting single lights with unacceptable light output. For visual checks the level of brightness must be switched to "low" (3 to 10 per cent of maximum).

2.6.14 For adjustment of the correct angle of the beam, lights are normally furnished with alignment markings. Furthermore, light manufacturers offer suitable adjustment equipment for their product. Beam misalignment caused by displacement of the optical system inside, however, cannot be corrected by adjusting the casing. When such misalignment is observed visually, the light should be adjusted in the workshop.

2.6.15 For measuring light output in the workshop the measuring equipment produced by the light manufacturer concerned should be used. The equipment consists of a bench to fix the light and a photocell sensor element. Microammeter readings should be compared with the calibration value. Directional adjustments can be made using the alignment screws.

2.6.16 Where light measurements have to be accomplished without the manufacturer's special equipment, a useful technique is to check the isocandela curve on a vertical surface located approximately 3 m in front of the light unit. With photocells at the vertical and horizontal limit lines of the isocandela curve, comparison with the light output of a new light will be possible. Lights should be switched to the maximum brightness level before testing.

Lamp replacement

2.6.17 The life span of lamps varies from 100 to some 1 000 hours of operation. The life time depends on the percentage of operation at high brightness levels and on the number of switchings. Also, dynamic stresses imposed by aircraft wheel loads (inset lights) and temperature-induced stresses inside the casing affect the lamp life. Lamps which have failed should be replaced as soon as possible since the lighting system of an airport has to meet specified serviceability requirements. Reference is made to Annex 14, Chapter 9.

2.6.18 Lamp replacement can be organized in two different ways:

- only lamps which have failed or lamps showing major output reduction are replaced upon checking; this method requires checks to be carried out at short intervals;
- bulk changing of lamps in certain sections of the entire lighting system, in accordance with a fixed time schedule. The intervals between replacements have to be derived from local experience with the average life of lamps in use. Lamps should be changed when they have been operated for 80 per cent of their average life. For this maintenance method a reliable record of operating hours for the individual sections of the airport's lighting system is a prerequisite. This method requires less frequent checks.

2.6.19 Lamp replacement in the workshop is preferable, particularly with inset lights. The unserviceable light should be removed from its position and replaced by a

serviceable light. Lamp replacement of elevated lights may be carried out on site provided that the casing can be opened easily and quickly, and the socket of the lamp needs no realignment afterwards.

Removal of water

2.6.20 Inset lights may sometimes collect water. Water inside the light increases corrosion, causes damage to electrical parts and deposits on lens and lamp and, further more, reduces the life of the lamp. Before inseting a light into the pavement good drainage of the opening must be ensured. Nevertheless, penetration of moisture and accumulation of water cannot be precluded completely. Regular inspection is necessary to check lights for the presence of water. Lights found to be wet inside should be removed and replaced, if such a procedure is possible with the type of light. Other wise, drying must be carried out on the spot. After drying, the sealings should be checked carefully and replaced when necessary. Before closing a dried light, the lamp should be switched on for some time to permit any residual moisture to evaporate due to the temperature increase inside.

2.6.21 Attention should be paid to the presence of water on and in front of the glass of inset lights. Water may bend the light beam, thus misaligning the light direction. If such a situation is observed, the drainage has to be improved.

2.7 SIGNS

2.7.1 Signs give pilots directional information for taxiing and holding. Maintenance should ensure integrity and perfect legibility of the information provided by the signs. The design and construction of signs varies considerably but the following general checks and, if necessary, maintenance action, are recommended for each sign:

Daily:

- lighting; replacing burnt-out lamps
- inscriptions for legibility and absence of obstructions; repairing the signs and removing obstructions.

Annually:

- mounting of both the sign and its lighting if provided; repairing
- structure and its paint; cleaning, repairing or replacing.

Unscheduled:

- after snowfall for legibility; removing obstructions
- after severe storms; re-positioning tumbled signs and repairing damaged signs.

when to inspect. In general, a spring and fall inspection will suffice to detect deterioration due to the winter and summer weather extremes.

2.8 MARKINGS

2.8.1 All markings on paved areas should be inspected at least semi-annually. Local conditions will determine

2.8.2 Markings which are faded or discoloured by soil should be repainted. When rubber deposits have been removed from the pavement all defaced markings should be restored as soon as possible.

Chapter 3

Maintenance of Airport Electrical Systems

3.1 GENERAL

3.1.1 The serviceability and operational reliability of air navigation equipment and installations are requirements for the safe operation of aircraft in the airport area. Apart from visual aids, the air navigation equipment and installations include electronic landing aids, navigation equipment, radar and equipment of the meteorological services. Guidance on the maintenance of visual aids is given in Chapter 2 of the manual, maintenance programmes for other equipment and installations are to be established by the appropriate authorities (ATC, Meteorological Services).

3.1.2 The required serviceability of installations and equipment will only be achieved as long as a constant power supply is maintained. To this end, regular maintenance work is required for airport equipment and installations distributing primary power and equipment supplying the secondary power when there is a circuit breakdown. The following paragraphs contain guidance on establishing maintenance programmes for the individual elements of the power supply systems, such as power cables, control cables, transformers, transformer stations, regulators, relay and switch cabinets and secondary power supply equipment. Furthermore, guidance is given on the regular maintenance of the floodlighting systems for aprons. Chapter 9 of the manual includes guidance on the maintenance of lighting systems in and around passenger terminal buildings.

3.2 PERSONNEL

3.2.1 Maintenance work on airport electrical systems should be assigned to skilled electricians, fully acquainted with the work to be done. As work is often required in high voltage areas, they should be well informed and kept up to date on safety measures. To protect personnel the required safety devices should always be kept in good condition.

3.2.2 The maintenance personnel should be present or on call during the operating hours of the airport. It may be

advisable to have the same persons take care of maintenance of both electrical systems and visual aids.

3.3 SCHEDULE OF MAINTENANCE

3.3.1 Schedules of routine maintenance of the individual elements of the airport electrical system should be based on manufacturers' recommendations adjusted to the operator's own experience regarding the frequency of malfunctions. Therefore, a record of maintenance work carried out will need to be maintained.

3.3.2 As the frequency of servicing depends on the type of equipment, it is not possible to set up generally applicable maintenance programmes. Therefore, the following schedules provide only general guidance on the setting up of a programme of preventive maintenance.

Power cables and distributors in field

3.3.3 Cables and distributors outside of buildings can only be checked where installed in channels. Preventive maintenance is not possible where power cables are buried in the soil. In such cases, work is restricted to repair when malfunctions have been noticed. Their maintenance should include semi-annual checking and, if necessary, taking the indicated corrective action, as follows:

- distributors located in manholes for cleanness and moisture; cleaning and drying
- plug-in and clamp connexions in the distributors for good contact; tightening and spraying
- manholes for condition of the interior; pumping-out, drying up or cleaning
- insulation resistance by measuring the earthing resistance of each circuit; recording readings and taking necessary corrective action.

Transformers and regulators (including standby units)

3.3.4 Maintenance of transformers and regulators should include checking and, if necessary, taking the indicated corrective action, as follows:

Monthly:

- power supply transformers and regulators for cleanness and oil losses; cleaning and replacing oil
- switches at all light intensity positions for malfunctions; restoring
- switch over to standby units for serviceability; restoring.

Annually:

- transformers for noise; investigating reason for any unusual sound and repairing
- over-all condition; repairing
- insulators; repairing or replacing
- collector bar system; cleaning
- voltage and amperage at all intensity levels, measuring and recording; adjustment of voltage to nominal level.

Transformer stations for electric power supply

3.3.5 Maintenance of transformer stations for electric power supply should include checking and, if necessary, taking the indicated corrective action, as follows:

Weekly:

- over-all condition visually; restoring
- fuse boxes for completeness of contents; adding missing fuses.

Semi-annually:

- insulators and electrical connexions; cleaning and restoring
- station for dirt and moisture; cleaning and drying
- locks to stations for serviceability; repairing and locking.

Annually:

- protection relay; adjusting
- high voltage cable insulation; recording condition of each cable; taking preventive measures
- earthing and its resistance; cleaning
- electrical supply system for noise and damage; repairing
- for rust, corrosion or defective coating; cleaning and painting
- warning signs and safety devices are present and in correct positions; cleaning or replacing
- safety grids for completeness, rust or coating deficiencies; completing, cleaning and painting
- safety grids for stability and earthing; tightening and restoring proper earthing.

Relay and switch cabinets (including switch cabinets in sub-stations)

3.3.6 Maintenance of relay and switch cabinets should include checking and, if necessary, taking the indicated corrective action as follows:

Semi-annually:

- turn and plug-in connexions for cleanness and good electrical contact
- relays for positive closing of contacts; cleaning or replacing
- electrical contacts for corrosion and wear; cleaning and replacing
- cabinet condition including proper weather seal, cleanness and mechanical damage; cleaning and repairing
- monitoring relay of series circuits for proper feedback; repairing
- voltage switch-over — if available — of two circuits for serviceability; repairing.

Annually:

- cabinet outer condition for dirt, moisture, easy access; cleaning and drying
- fuses (if provided) and fuse sockets; cleaning and spraying sockets and replacing fuses
- voltage output for all series circuits; recording results; taking corrective action.

Control cables, monitoring units, control desk

3.3.7 Maintenance of control cables, monitoring units and control desk should include checking and, if necessary, taking the indicated corrective action, as follows:

Daily:

- optical and acoustical signal for feedback; restoring.

Weekly:

- nominal control voltage; charging battery
- voltage and ammeter readings; adjusting
- acid level in batteries; adding distilled water.

Monthly:

- functions of the monitoring unit
- parts for cleanness and condition; cleaning and repairing or replacing.

Quarterly:

- system components for loose connexions; tightening, repairing or replacing
- control desk for over-all operation; investigating any malfunctions; repairing or replacing parts
- mimic panel indications for conformation to field conditions; correcting or adjusting
- mechanical structure of the desk for stability, repairing.

Semi-annually:

- replace lamps in monitoring units.

Annually:

- cables and distributors; cleaning and repairing
- relays for cleanness; cleaning
- control and monitoring units; replacing
- connexions; tightening and spraying.

Unscheduled:

- insulation of cables after each lightning strike, i.e. insulation between wire and wire, and insulation between wire and ground; improving insulation.

Secondary power supplies (generators)

3.3.8 Maintenance of secondary power supplies should include a monthly test run and checking and, if necessary, taking the indicated corrective action, as follows:

- switch-over time from primary to secondary power supply for conformation to the requirement
- voltmeter readings to ensure that the voltage remains within acceptable tolerances
- transfer equipment for excessive heating and malfunctions
- generator for vibrations and excessive heating
- diesel engine for any irregularities and oil leakage
- fuel level in the tank after the test run; refilling with fuel if necessary
- abnormal or undesirable performance; taking corrective action and repairing
- recording the meter readings of the test run and comparing with former records to detect potential deficiencies.

Fixed 400 Hz ground power supplies

3.3.9 Maintenance of ground power supplies should include checking and, if necessary, taking the indicated corrective action, as follows:

Daily:

- plugs, cables and cable holdings; repairing.

Weekly:

- proper functioning
- tightness (oil spillage) and loose connexions; repairing.

Monthly:

- serviceability of control lamps; replacement
- screw connectors at the contact rail for potential temperature rise; improvement of contact

- cleanness of cables; cleaning
- ventilator flaps and orifices for cleanness; cleaning
- cone belts, driving the ventilator system; adjustment of belt stress.

Quarterly:

- current-input cables for potential deformation; removal of deficiencies
- connector boxes for:
 - mechanical damage
 - proper mounting of plug sockets
 - condition of contact clips in the plug sockets
- bearings for lubrication.

Semi-annually:

- cables (wires and insulation) for serviceability; repairing or replacing
- main conductor cables for temperature rise under nominal electric power; removal of discovered deficiencies
- connectors, plugs and cable holdings; adjusting and tightening
- switches for proper operation; removing of dust and dirt from switch elements
- fixings holding the regulator and switch cabinet housings; tightening of mounting screws or bolts.

Apron floodlighting

3.3.10 Maintenance of apron floodlighting should include checking and, if necessary, taking the indicated corrective action, as follows:

Daily:

- lamp outage; replacing lamps
- switching operation from remote control; repairing.

Annually:

- turn and plug-in connexions for cleanness and good electrical contact
- relays for serviceability; cleaning or replacement
- contacts for corrosion and wear; cleaning or replacement
- relay cabinet condition including proper weather seal, moisture, cleanness, mechanical damage; cleaning, drying and repairing
- fuses and fuse sockets; cleaning and spraying sockets and replacing fuses
- relay cabinet outside condition including free access thereto.

Chapter 4

Maintenance of Pavements

4.1 SURFACE REPAIR

General

4.1.1 The surface of a runway should be maintained in a condition that precludes harmful irregularities or breaking off of pieces that would be a hazard to aircraft operation. Reference is made to Annex 14, 9.4.3. This specification requires continuous monitoring of pavement condition, and repair when necessary. Repair of pavements is costly and often imposes restrictions on the airport traffic even when damaged areas are small. Preventive maintenance is therefore of high importance for airport pavement management.

Portland cement concrete pavements

4.1.2 Surface damage on portland cement concrete pavement normally stems from design or construction failures, such as insufficient cement, too high water content in the mixture, improper treatment during hardening, frost reaction on unsuitable aggregates or penetration of chemical de-icing fluids into micro cracks or pores. Typical forms of surface damage are:

- porous or disintegrated surface
- separation of thin top surface layer
- extreme smoothing of the surface created by polishing under traffic
- breaking up of pavement where cracks extend into the inner layers.

4.1.3 Where the damaged layer of pavement is very thin and damage is identified as being the result of improper surface treatment during construction, surface scoring or grinding is often sufficient to correct the condition. Where the loss of thickness thereby does not create problems and the concrete below is in good condition, no other treatment is required to restore the concrete pavement section. It should be checked that this kind of repair does not lead to unevenness or formation of puddle areas.

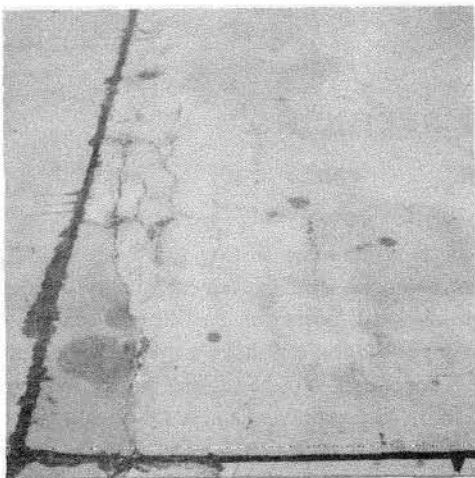
4.1.4 Where the surface has been found to be too porous, but no other pavement quality deficiencies have been observed, pores can be filled by sealing or coating. Epoxy resin solutions have proven to be suitable. The liquid penetrates into the surface material down to a depth of 5 mm. When applying epoxy resin sealings, the forming of closed surface films must be avoided. Such a film would hamper moisture evaporation from within the concrete causing early destruction of the repaired surface. Furthermore, the surface will become too smooth and slippery when wet.

4.1.5 Where concrete surface material is more severely damaged with deep cracks, (see Figure 4-1), the damaged material has to be ground off until sound concrete material is reached. After grinding, the surface must be fully dry and free of dust before being refilled. The new surface has to be pretreated with a diluted solution of synthetic resin to create good adhesion. Where reinforcement steel is exposed, all rust has to be eliminated and wires must be covered by a new coating of epoxy resin or equivalent. A layer of epoxy grout is put on top of the pretreated area and levelled at the required thickness. A lean mixture of grout is recommended to permit the patch material to conform to the physical characteristics of the pavement. Similar shrinkage characteristics are most important for the grout to avoid chipping off after hardening. The grout can be made of special quartz sands or ceramic material. To prevent the surface from becoming too smooth, coarse quartz sand can be strewn on the still wet grout. Joints between concrete slabs should not be filled with grout in the course of repair.

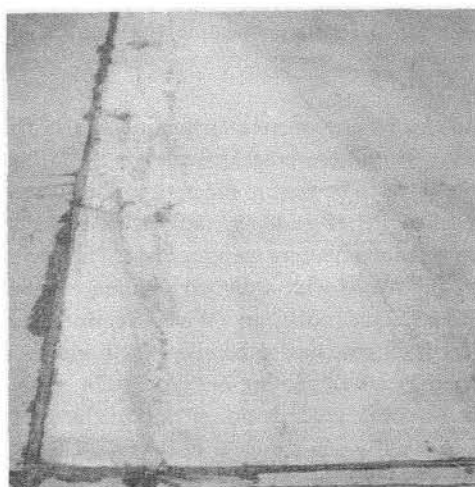
4.1.6 For urgent provisional pavement surface repair special quick-hardening cement products are available which gain high strength within one hour or less. Experience has shown, however, that the durability of such material is rather short.

Bituminous pavements

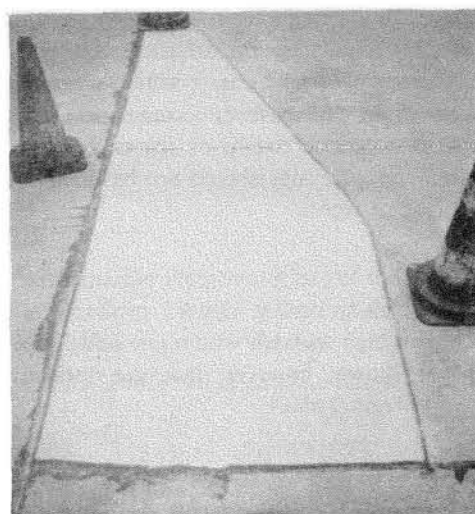
4.1.7 Surface damage on asphalt normally stems from wrong composition of the bituminous mixture, impact of



a. Surface cracks in a concrete slab



b. State of the damaged area after start of milling



c. Former damaged area after filling with epoxy resin grout

Figure 4-1. Surface repair of concrete pavement showing minor damage

fuel, grease or solvents, extreme spot loading, mechanical wear or destruction by chemicals. Also, frequent freezing and thawing may cause damage when de-icer fluid penetrates into the deeper layers. Other forms of damage are decay by weathering of the surface structure, softening of the surface and deformation.

4.1.8 When damage is minor and concerns the surface only, the repair can be carried out by spraying a bituminous seal onto which quartz sand or crushed basalt material is spread and rolled.

4.1.9 Where damage affects more than just the surface, the whole affected layer should be removed by grinding. The minimum grinding depth is 3 cm to allow reconstruction of an asphalt layer consistent with sound engineering. The bed for the new layer must be sharply edged to receive a clean seam. After grinding, the strips have to be carefully cleaned from contamination and grinding material (e.g. by road type suction sweepers) before they are sprayed with a bituminous binder. Then the new layer will be brought in, in accordance with road engineering design practice. Compaction (rolling) must be carried out very thoroughly at the edges of the old asphalt in order to close the joints. Covering the joints by spraying with a bituminous seal is recommended.

4.1.10 In cases where damage goes deeper, repair must include the sub-base material. In the course of such maintenance work sub-grade material may have to be replaced and compacted to restore its bearing capacity under the repaired pavement area. The bituminous layer or layers would then be laid according to good engineering practice.

4.2 REPAIR OF JOINTS AND CRACKS

Joints in concrete pavements

4.2.1 Joints are provided in concrete pavements to eliminate stress induced by length variations of the concrete material due to temperature changes. Joints must be closed with a fuel resistant elastic material (bituminous sealant or hose-type plastic¹ sealant) to prevent surface water from penetrating into the sub-base or subgrade and hard debris or stones from being pressed between adjacent concrete slabs. Once a joint becomes permeable the subgrade may be washed out and voids below the slabs may weaken the supporting capability of the base material. Where there is not a frost-resistant, well-drained subgrade under the pavement, it will suffer from frost impact. Both effects will

result in destruction of the concrete. Basically, it is the sensitivity of the subgrade to water that determines the joint maintenance requirements.

4.2.2 The first sealant of a concrete joint will remain serviceable for a period of four to six years, depending on the mechanical and thermal impact of the pavement. Later on the sealing material will lose part of its original elasticity and — due to shrinking — it will fail to adhere to the side flanks. Mechanical forces applied to such aged sealant will start the sealant breaking off, and rotary brooms of sweeping or snow clearing machines will accelerate the process. To protect concrete pavements from severe damage, a renewal of all joint sealants is necessary when the material in the joints is observed to fail and break off.

Concrete joint maintenance

4.2.3 For concrete joint maintenance all old sealing material has to be removed. A so-called “joint plough” may be used to carry out this task. Then the bare slab flanks should be cleaned thoroughly of soil, grease and dust. Where edges are damaged they should be repaired with a suitable synthetic resin grout. After inserting a new inlay to limit the depth of the sealing material, the joint may be refilled with the liquid sealing material. Attention should be paid *not to fill the joint up to the top*. A surplus of sealing material in the joint will swell above the top when the pavement expands under thermal stress. This may lead to surface contamination later on. The selected material must be fuel-resistant, particularly in pavement sections where fuel spillage may occur occasionally.

4.2.4 When joints are to be closed by plastic material, such as hollow Neoprene profiles, the same method for joint cleaning and preparation is applicable. To improve the sealing capacity of plastic material, the concrete flanks should be covered with an adhesive before placing the sealing profile into the joint. At joint intersections and ends the plastic material must be welded together to prevent water entering at the insert and it acting as a hose distributing water to the entire joint system.

Joints in bituminous pavements

4.2.5 Recent experience indicates that it is useful to provide for joints in bituminous pavements. For airport asphalt construction hard types of bituminous material are required. Reaction to temperature changes in such pavements is quite comparable with that in concrete. Unpredictable crack formation is very likely to occur in bituminous pavements, due to thermal stress. Stress reliever joints not wider than 8 mm and not deeper than two thirds of the thickness of the wearing course may be cut into the

1. e.g. Neoprene profile sealing.

pavement to control the crack formation. When the pavement shrinks at low temperatures, cracks will only appear under the joints and these can be sealed to prevent water penetration.

4.2.6 Joints in bituminous pavements should be filled with a hot bituminous sealing material without any synthetic components. The chemical relationship between the pavement and the sealing material, and the almost identical thermoplastic reaction of both, provides a reliable closure of the joint.

4.2.7 Where joints in bituminous pavements are damaged they normally can be repaired by filling with a hot bituminous sealing material, if the opening is not wider than about 3 cm. The same type of repair should be carried out where the sealing material is observed to have sunk into the joint.

Cracks in concrete pavements

4.2.8 Reasons for cracks in concrete slabs can be:

- incorrect forming of expansion joints which has resulted in a transfer of force between concrete slabs
- delayed cutting of hinged joints (dummy joints) in the construction phase so that shrinkage due to hardening was able to generate random strain cracks
- improper treatment during the initial hardening phase as, for instance, due to strong sun radiation on fresh concrete
- incorrect compacting of sub-base and therefore uneven settlement of subgrade so that slabs are not supported equally
- insufficient dimensioning of concrete slabs in view of the load applied on them.

4.2.9 “Wild” cracks in concrete always go through the full depth of the slab. On the surface the crack will appear in the form of a hair crack or a break, the latter giving the separated parts the freedom to move one against the other. Repair of cracks in concrete can never restore its capability of load transfer. The purpose is only to avoid water penetration from the surface into the subgrade.

4.2.10 Cracks in concrete slabs should be repaired by transforming the breaks into expansion joints. The crack has to be widened by cutting a slot along its length about 1.5 cm wide and 1 cm deep. The widened crack must be filled with a fuel resistant thermoplastic sealing material.

4.2.11 When the subgrade is particularly affected by water, and optimum water tightness is required, a channel about 20 cm wide and 2 cm deep should first be cut along

the track of the crack and then the crack widened to a slot as described in the preceding paragraph. The cleaned slot is filled with a flexible dummy insert. Then, after appropriate cleaning and priming the channel is filled with an epoxy resin grout. When the resin has hardened the insert is removed from the widened crack and the resulting void filled with a fuel resistant thermoplastic sealing material (Figure 4-2).

4.2.12 Hair crack repair can be accomplished by sealing the crack zones with epoxy resin solvents. Since the solvent will not penetrate very deeply into the crack, damaged slabs should be inspected regularly and sealing repeated when necessary. A hair crack slab has not lost much of its bearing capacity and thus does not represent a severe deficiency to the operational serviceability of the pavement.

Cracks in bituminous pavements

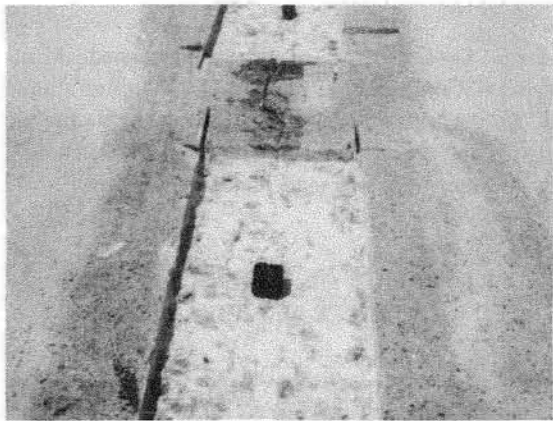
4.2.13 Cracks in bituminous pavements result from thermal stress building up in vast pavement areas when there are no expansion joints. Other reasons can be an insufficient adhesion of construction joints between adjacent lanes or deficiencies of subgrade bearing strength at isolated points due to construction mistakes. Repair of such cracks is essential to avoid penetration of water or de-icing agent into the sub-base or subgrade. It is, however, not possible to stick the cracked parts firmly together and to retain the original stability of the pavement.

4.2.14 Cracks in bituminous pavements can be filled with a sealing emulsion without prior grinding. Special emulsions of high fluidity are available that will penetrate deeper into the crack than hot bituminous sealings. The filling can be carried out manually by using cans, or mechanically by using special pouring equipment. With a first run the crack’s interior flanks will be covered, with a second run the crack can be filled up. The procedure should be repeated yearly or at longer intervals, depending on local climatic conditions.

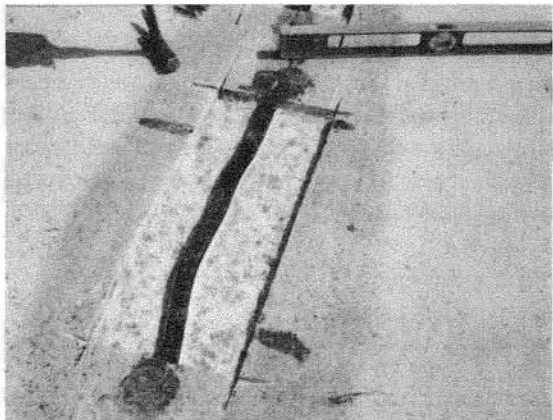
4.3 REPAIR OF PAVEMENT EDGE DAMAGE

General

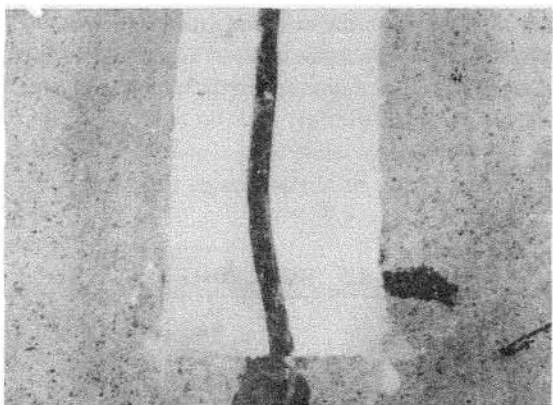
4.3.1 Broken edges occur most frequently at pavement joints. The reason for this type of damage is the undesirable transfer of force across the joint mostly produced by incorrect joint design or stones pressed into the joint. The pavement material above the point of contact is split off due to the induced compressive stress. Another reason can be the application of extreme point loads near to a slab



a. Removal of surface material along the crack in channel shape



b. Widened crack filled with a flexible dummy insert or plastic sealant



c. "Channel" refilled with epoxy resin grout and crack tightly closed by a joint sealant

Figure 4-2. Repair of a deep crack in a concrete pavement

joint or slab edge as is sometimes caused by snow removal equipment. Corners are particularly sensitive to overload when for some reasons the slabs are insufficiently supported by the sub-base.

4.3.2 Broken edges produce loose parts of various size which create a substantial risk to aircraft. Furthermore, surface irregularities on pavement are undesirable for aircraft and ground vehicles. Therefore, broken edges should be repaired as soon as possible. At least, imminent danger to aircraft should be minimized by removing all loose material from the pavement surface and closing provisionally deeper openings in the pavement surface.

Edge repair

4.3.3 Part of the maintenance should be to carry out careful investigation of the damaged section to find out the reason for the failure. When making the repair, the treated area should be made big enough to cover all damage. The boundary should be cut to a depth of at least 2 cm and all inside pavement material removed down to such a depth that all loose material is eliminated. Cutting can be done manually or by means of an electric hammer. When the damage is at a joint, the joint sealant must be removed to a length and depth of 5 cm beyond the cut out section. The joint's flanks have to be cleaned and dust and debris removed from the opening, preferably by compressed air. After preparing the cut surface with a primer and after putting a form into the emptied joint, the opening can be refilled with a suitable synthetic resin mixture. It is most important that in the course of filling the cut area no bridge is built up between the two neighbouring slabs, since sooner or later it would become the source of a new break in the repaired edge. Compacting should be done layer by layer and when smoothing the surface a chamfer should be provided at the edge. After hardening, the form in the joint can be removed, flanks in the joint cleaned, and the joint filled with a hot sealing material.

4.3.4 A filler material that meets the requirements of the climatic impact on the airport's pavement should be chosen. It is essential to add sufficient aggregate (quartz, glass pearls or other ceramic) to achieve a lean mixture with a small shrinkage ratio. Filler material which obtains its nominal strength no sooner than 24 hours after mixing has proven to be more suitable than quick hardening material.

4.3.5 For provisional repair some special cold asphalt materials have been developed which gain sufficient strength by compacting or hammering. Such material can be used for quick repair of both concrete and bituminous pavement. The costs are comparatively high and duration is limited, particularly on concrete pavement.

Corner repair

4.3.6 Broken corner repair will be carried out in the same way as described for edge repair. Attention should be paid to the slab's need to expand in two directions. Furthermore, the surface of the repaired slab must be level with both neighbouring slab surfaces.

4.4 REPAIR OF OTHER PAVEMENT SURFACE DEFICIENCIES

4.4.1 High quality requirements have been specified for runway pavement surfaces. The surface texture shall provide good friction characteristics and the runway surface shall be constructed without irregularities that could adversely affect the landing or take-off of an aeroplane. Reference is made to Annex 14, Attachment A, Section 5, and the *Aerodrome Design Manual*, Part 3.

4.4.2 Where the friction characteristics of the runway surface have been found to be below the level specified by the State, remedial action will have to be taken. Repair measures may range from cleaning the surface of contaminants to major repair. According to experience the following three techniques are in use:

- surface dressing;
- grooving of surface;
- scoring of surface.

Details on these methods for improving runway surface texture are given in the *Aerodrome Design Manual*, Part 3, Chapter 5.

4.4.3 With time a surface may become uneven without generating cracks. Where the unevenness occurs in spots and is moderate, scoring or milling the surface can help to restore the required surface quality. Where the deficiencies are found to be more severe, corrective action, such as the construction of an overlay, may become necessary. Such work is generally not considered a matter of maintenance but rather a matter of airport design practice.

4.5 SWEEPING

Purpose of sweeping

4.5.1 For safety reasons the surfaces of runways, taxiways and aprons have to be clean of sand, debris, stones or other loose objects. Reference is made to Annex 14, 9.4. Aircraft engines can easily ingest loose material, and suffer severe compressor blade or propeller

damage. There is also the risk that propeller or jet engine blast may cause loose objects to be “shot” like bullets against adjacent aircraft, vehicles, buildings or people. Also the tread on tires of taxiing aircraft or any other moving vehicle may throw up objects and cause damage. Maintenance of movement areas requires constant monitoring and regular sweeping of surfaces.

Surface monitoring

4.5.2 *Runway and taxiway contamination.* Objects to be found on runways and taxiways stem from the following sources:

- debris from damaged pavement
- debris from joint sealings
- rubber debris from aircraft tires
- stones from grass mowing
- metal or plastic parts from aircraft
- sand and soil from heavy storms or engine blast of aircraft
- dead birds or other small animals hit by aircraft.

4.5.3 *Visual checks on runways and taxiways.* Visual checks should be carried out regularly and at least every six hours during operating periods. Immediate checking is necessary upon advice of pilots on the existence of objects or debris. Special attention should be paid to the cleanness of runways and taxiways, when construction work on or near operational surfaces is going on. When construction machines or trucks use surfaces used also by aircraft, more frequent checking than normal is recommended.

Cleaning of surfaces

4.5.4 *Frequency of sweeping.* Surfaces intended to be used by aircraft and ground vehicles have to be swept regularly. The interval between sweepings depends on local needs and experience. Certain areas such as aircraft stands or freight handling zones at busy airports may require sweeping at least once a day.

4.5.5 *Sweeping equipment.* To accomplish the task of regularly sweeping all paved portions of the movement area, the use of truck-type cleaning equipment is practicable. The efficiency of the sweeper required depends on the size and traffic volume of the airport.

4.5.6 Integral sweeper-blowers as used for snow removal have the highest efficiency. They are useful for sweeping runways, taxiways and wide open areas such as the outer portions of aprons, but because of their greater turn radii and the tendency to blow up dust clouds, they are not suitable for aircraft-populated apron areas on positions close to buildings.

4.5.7 Truck-type street sweepers are the right equipment for sweeping populated apron areas, service roads, access roads, walkways, parking lots and even hangar or shed floors. They are available in many different sizes. They work like vacuum cleaners, suppressing dust generation. To enable them to pick up heavy iron metal parts a magnetic beam can be mounted close to the sucking orifice or to a trailer pulled by the sweeper truck.

4.5.8 *Personnel discipline.* Even with regular sweeping the airport authority cannot fully guarantee the absence of contamination in the areas where work is continually being carried out. Regular training courses for the apron personnel on accident risks and the benefit of discipline are useful to minimize careless attitudes on the movement areas. Sweeping can only keep the foreign object damage low when the whole staff takes notice of the problem and keeps the movement area as clean as possible.

4.5.9 *Apron contamination.* Aprons are more likely to become contaminated than other aircraft movement areas on the airport due to the greater number of users of this area, traffic concentration and the loading process going on there. Objects found on aprons include stones, bottles, cans, stoppers, bottle caps, lost hand tools, personal belongings, nails, screws, bolts, paper, rubber, wire, plastic material, wooden, textile, synthetic and metal parts of all sizes from boxes, cases, pallets, containers and other packing devices. Contamination is worst in freight handling areas and, of course, near construction areas. Another kind of contamination to the pavement surface is by hydraulic oils, fuel and lubricants. Special cleaning measures to be taken are described in 4.6.

4.5.10 *Visual checks on aprons.* Through training programmes and regular reminding, personnel working on the apron can be taught to watch and visually check the condition of the apron and report on cleaning needs. Apron management service or the unit/service responsible for traffic on the apron should take immediate action to clear the apron of any dangerous contamination or debris observed or reported. Furthermore, inspection tours or walks should be carried out — when traffic activities justify — several times a day to ensure that the need to remove objects or any contamination on the apron is recognized in time.

4.6 CLEANING OF CONTAMINANTS

Purpose of cleaning pavements

4.6.1 Paved surfaces on airports can be contaminated by fuel, lubricants, hydraulic oils, marking paint or rubber. Contaminants may cause slipperiness and cover surface

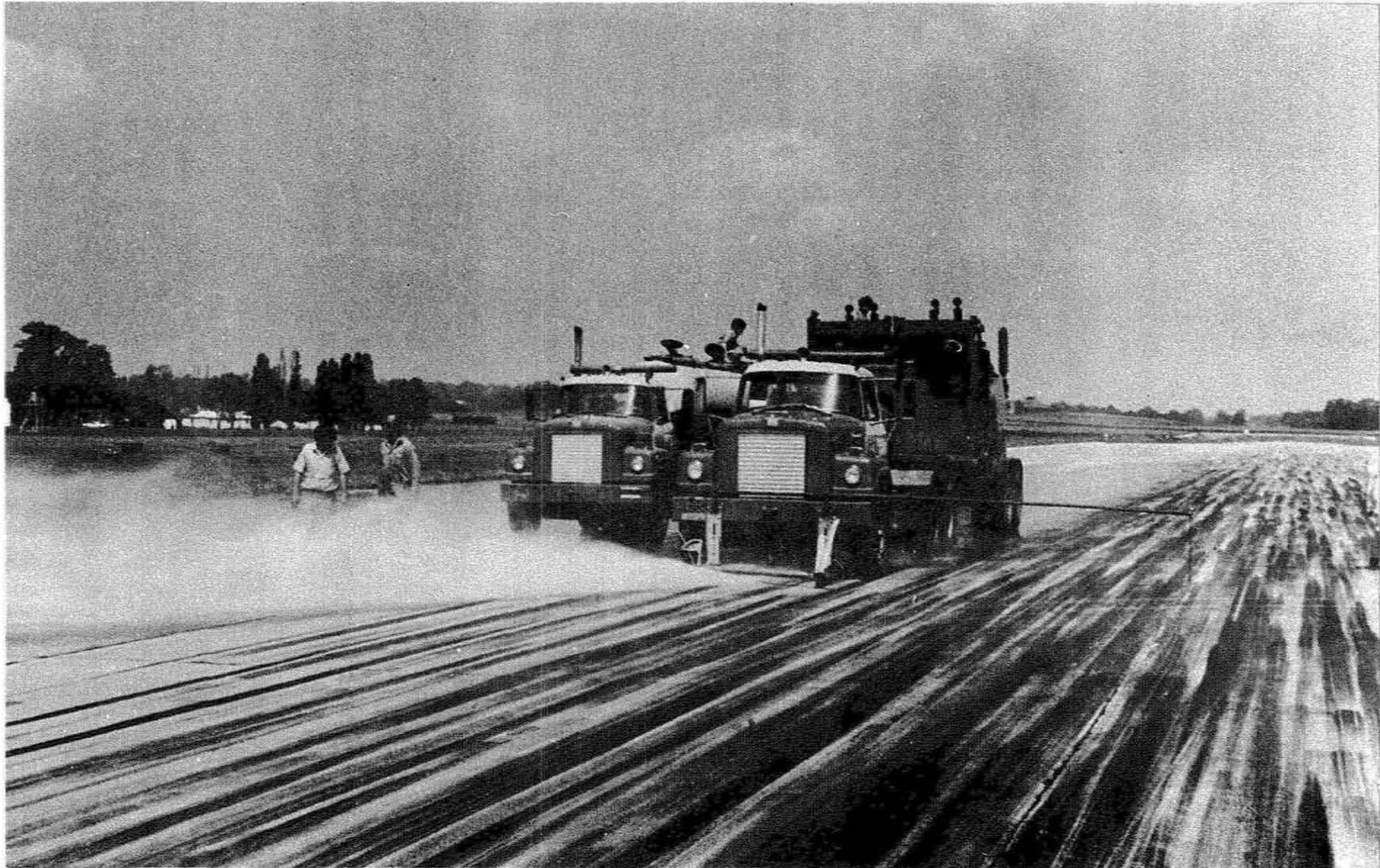


Figure 4-3. Rubber removal by the high pressure water blast method

markings. Oil and rubber deposits on runways adversely affect the braking action of aircraft particularly when pavements are wet. A clean runway surface therefore is a safety requirement. Reference is made to Annex 14, 9.4.7.

Removal of rubber deposits

4.6.2 Aircraft wheels contact the runway surface at high speed on touchdown resulting in a build-up of rubber deposits. Due to the friction-induced high temperature in the wheel contact area the rubber melts and is smeared into the surface texture. The rubber film is sticky and with the passage of time increases in depth. Layers of up to 3 mm thick may build up within 12 months in the touchdown zone of a busy runway. The aim of rubber removal is to restore the original macro roughness of the pavement surface. Such restoration is important to provide good drainage under the wheel in wet conditions.

4.6.3 Three methods are described below for removing rubber:

- chemically
- by mechanical grinding
- by high pressure waterblast.

The three methods are all effective; however, they are different in terms of speed, cost and erosion of surface material.

4.6.4 Rubber should be removed from runways when friction measurements under wet conditions indicate significant loss of braking quality in critical runway sections. Reference is made to Annex 14, 9.4.7. Further guidance on rubber removal is given in the *Airport Services Manual*, Part 2 — Pavement Surface Conditions.

4.6.5 *Chemical method.* The area of pavement to be treated is sprayed with a liquid chemical from a tank vehicle having a spray bar, or by hand with hose and nozzle. The chemical's reaction time ranges from 8 to 15 minutes, depending on the depth of the rubber film. During this time the rubber (and paint) swell up and can be flushed away with high pressure water jets. Sweeper trucks or other equipment must clean the water-flooded area sucking up the loose rubber from the surface. Special equipment has been developed combining flushing and sucking in one vehicle. The chemicals dissolve not only rubber but also paint markings and bituminous material. When applied to asphalt pavements, sufficient water flushing is important to protect the pavement. The treatment must not be interrupted before treated patches have been flushed thoroughly with water.

4.6.6 *Mechanical grinding method.* There are various methods of grinding pavement surfaces. As runway maintenance should preserve the integrity of the original surface, a milling method has proven to be satisfactory. Milling rollers composed of metal discs on a rotating shaft are passed over the surface. The distance between the shaft and the pavement is controlled so that the discs just hit the pavement, but without much pressure. With three rollers fixed to the vehicle's chassis, a strip of about 1.8 m can be cleaned at one run. Working speed goes up to 500 m² per hour if rubber deposits are not too thick. The milling not only removes the rubber layer but, depending on the height control of the roller shaft, also roughens the pavement surface. While this can effectively improve the surface texture, the milled depth should be kept as small as possible. All mechanical methods must be applied very carefully to avoid severely damaging inset lights and joints between slabs. Sweepers must follow the milling vehicle to clean the strip of dust and rubber debris.

4.6.7 *High pressure water blast method.* Rubber removal is accomplished by high pressure water jets directed at oblique angles to the pavement surface (see Figure 4-3). The equipment normally consists of a tank vehicle with motors pumping water at high pressure, e.g. 40 MPa through a nozzle bar guided closely above the pavement surface. Water consumption is high, about 1 000 L per minute. The angle of attack of the water jets can be varied, e.g. by rotation of the nozzle bar. Working speed will range from 250 m² to 800 m² per hour. Cleaning has to be done by sweepers following the removal truck at some distance. Where water supply is not a problem, the high pressure waterblast method is most efficient. As opposed to the chemical method, there are no special measures required for environmental protection.

Fuel and oil removal

4.6.8 Contamination by fuels, lubricants and oils can be found on many apron areas, such as aircraft stands and areas used regularly by loading vehicles. Contaminants can be removed by spraying grease solvents followed by water flushing. If necessary water jet cleaning may follow to achieve optimum results. Where fuel or oils are spilled accidentally the spillage must immediately be covered by oil-absorbing material, as developed by the oil industry. This material is a powder or granulate which, scattered on the spillage, absorbs the liquid and can be easily removed later by sweeping. However, it does not absorb oils already soaked into the pavement material. Repeated oil soaking of concrete and/or bituminous asphalt may deteriorate the surface material and require surface repair instead of cleaning. Since surface drainage from apron and workshop

areas normally runs into the sewage system, national rules on environmental protection have to be borne in mind when cleaning pavements by means of chemicals.

4.7 REMOVAL OF SNOW AND ICE

General

4.7.1 Winter service on many airports means removal of snow and ice from:

- aircraft movement areas
- service roads
- public roads and parking lots

to restore conditions to as near to normal as possible. The number of service trucks and special equipment vehicles required depends on:

- climatic conditions
- the extent of the area which has to be cleared, and
- time needed for clearing.

4.7.2 Industry has developed highly efficient equipment and vehicles for winter services, capable of rapid snow removal from level straight surfaces. Aprons, however, have more complex geometry and, furthermore, are occupied by aircraft and ramp handling equipment. The most efficient snow removal equipment used for clearing runways and taxiways can hardly be operated on aprons, since strong snow blowers on an apron would cause damage to vehicles, parked aircraft and buildings. Other removal techniques apply there. Procedures for removal of snow and ice from airport pavement surfaces are described in the paragraphs below. Additional material on methods and equipment used for snow removal and ice control is given in the *Airport Services Manual, Part 2 — Pavement Surface Conditions*.

Snow plan and snow committee

4.7.3 A snow plan has to be developed before the beginning of the winter season. The snow plan contains information on:

- responsibilities for winter services
- rules on air traffic interruptions for snow and ice removal operations
- rules on communication and information on the performance of winter services
- priorities for snow and ice clearing of aircraft movement areas
- availability of vehicles and equipment for snow and ice removal

- performance of winter service
- method of friction measurement on aircraft movement areas.

4.7.4 At airports used by airline operators the snow plan should be agreed with local airlines and the authority responsible for air traffic control.

4.7.5 To ensure good co-operation all practical matters of the winter service should be discussed on a regular basis among competent representatives of the airport operator, ATS, MET and airlines. To achieve this co-operation the formation of a snow committee can be helpful. The aim is to establish a suitable system for rapidly communicating actions caused by weather changes, like *runway closures and re-opening and priority for take-off clearances for waiting aircraft*. Moreover, the authority responsible for snow and ice removal should lay down in the plan priorities for clearing areas other than the movement area and inform or seek agreement with the parties concerned, e.g. airlines, fuelling companies, police departments, freight forwarders, catering companies and other concessionaires.

Responsibilities

4.7.6 The airport operator is responsible for maintaining the aircraft movement area in a safe condition. The airport operator is responsible for clearing snow and ice from runways, taxiways and aprons and reporting on the resulting condition of the cleared surfaces to ATS via phone or radio. Reported data on runway conditions should be published in the airport's SNOWTAM.

Procedures for interrupting air traffic

4.7.7 The operations officer takes decisions on closing down a runway when snow or ice removal becomes necessary. Temporary traffic interruptions for winter services on runways should be made known to airlines concerned. Close contact with ATS has to be maintained and information on time and duration of runway closures has to be given to ATS, so that aircraft heading for the airport will be informed. The same information has to be given to airlines at the airport affected by the time of closure. In the case of long interruptions of runway use, a NOTAM has to be filed.

Procedures for snow removal

4.7.8 *Priorities for clearing the movement area.* The order of priority for the snow and ice clearing process is governed by air safety requirements (reference Annex 14, 9.4.10):

- runway in use
- taxiways serving the runway in use
- apron taxiways
- aircraft stands and stand taxilanes
- other operational areas.

4.7.9 *Control of vehicle trains.* A basic safety requirement is in-depth training of removal equipment crews. Only drivers fully familiar with the vehicles and equipment, with the local conditions (i.e. the layout of the airport) and having certificates for radiotelephone operations will be capable of fulfilling the rather difficult task, especially during night and/or under low visibility conditions. When snow clearing is performed by more than two vehicles, a senior officer should accompany the removal crew in an extra car to direct the removal operation via radio. He keeps in radio contact with the airport's tower and controls the vehicle train until they return to their shed or parking area. He also reports on the progress of work and the resulting surface conditions in the movement area.

4.7.10 *Task organization principles.* When proceeding to the runway the snow clearing vehicles should move along the major taxiway serving that runway so that the access to the runway will be available when the runway is cleared. On airports with large apron areas and a great number of aircraft stands, snow clearing should be performed simultaneously on the runway and on the apron. The procedure will help minimize the length of time during which the airport must be closed. For such cases the fleet of vehicles and the personnel must be divided to form two trains, working simultaneously. After clearing the movement area a train of vehicles should start to clear other operational areas in accordance with the priority plan, i.e. major connecting roads, secondary roads, loading bays, parking lots, etc.

4.7.11 *Snow removal from runways and taxiways.* Snow clearing should start as soon as possible after the beginning of a snowfall, since vehicles can work very fast as long as the snow cover is still thin. When the wind is calm or in the absence of strong side winds, snow removal is performed stripwise from the centre to the edge of the paved surface. With strong side winds the removal starts from the windward side of the surface and moves to the lee side.

4.7.12 *The full complement of snow clearing equipment* required for rapid removal of snow from paved areas consists of snow ploughs, snow sweepers and snow blowers. They should work together in a staggered formation with a group of ploughs ahead running down the length of the surface followed by a group of sweepers. The vehicles turn around at the end of the surface and work on

their way back to avoid idle runs. Ploughs will have finished their work in about half the working time of sweepers, thus being free to continue snow removal on other runways or taxiways.

4.7.13 Another procedure is the operation of vehicles combining plough and sweeper in one piece of equipment (see Figure 4-4). A train of such vehicles can remove snow from runways and taxiways in the same way as described above, but the time required for getting the runway/taxiway system clear of snow will be longer since the progress is determined by the working speed of the rotary brooms on the sweepers. This slower procedure, however, requires fewer trailing vehicles and therefore fewer personnel than the faster procedure described in the preceding paragraph.

4.7.14 For snow layers of less than 1.5 cm, snow removal can be accomplished by sweepers and blowers without ploughs (see Figure 4-5).

4.7.15 The number of vehicles required for snow removal depends on the width of the runway, the width of ploughs and brooms and the given time frame for the operation according to the prevailing winter climate and traffic demand.

4.7.16 *For the protection of the runway edge lighting system,* snow ploughs and sweepers should not remove snow close to the lights. One method to keep the fast-going plough formation away from the edge lights is by running a single plough along the edge and move one strip of snow towards the inner part of the paved surface (see Figure 4-6). The following train of ploughs will then have good guidance where to pile the snow wall without covering or even cutting off the lights.

4.7.17 The snow banks on one or both sides of the cleared surface have to be removed by throwing all of the compacted snow far beyond the edge of the surface by means of snow blowers. Snow blowers run at the end of a snow removal train. If time and air traffic situation permit, this strip can be further cleaned by another sweeper running over it after the blower has done its work. The aim of snow removal is to achieve safe friction coefficients for landing aircraft and low wheel drag for take-off. After completion of the removal, the responsible operations officer carries out friction measurements with a measuring vehicle. Reference is made to Annex 14, 2.9.8. Additional de-icing measures will have to be taken when friction measurement results so require. Results of the final measurement should be reported to the tower and — if conditions appear to remain stable — published in the next SNOWTAM.

4.7.18 *Snow removal from aprons.* While snow removal from aprons has lower priority than snow removal from runways and taxiways, clearing of apron surfaces should nevertheless start as early as possible to avoid frozen precipitation and slippery surfaces. Loose snow compacted by wheels is difficult to remove, even with mechanical equipment, and causes a considerable risk to drivers of ground handling equipment.

4.7.19 Snow and ice removal on aprons starts with apron taxiways and stand taxilanes to make markings and/or centre line lights clear and visible to flight crew members and marshalls. Special areas on the apron have to be assigned for snow disposal or, if this is not possible, all snow has to be loaded on trucks and carried to a remote and well drained site. Loading can be accomplished most efficiently by use of special loader blowers. Snow blowers can be used to remove snow banks created by the ploughs.

4.7.20 Sweeper-blowers can also help clear an apron. In narrower parts, however, and especially near parked aircraft smaller sweeping vehicles have to be used. No heavy equipment should work closer than 5 m to an aircraft to avoid damage due to loss of control resulting from a slippery surface.

4.7.21 There may be special places on aprons, e.g. the movement area of undercarriages of passenger loading bridges, which have to be kept clear of all kinds of slippery

precipitation. Use of chemical or thermal de-icing measures for these areas may be necessary.

4.7.22 *Snow removal from other operational areas.* Service roads will be cleared in the same way as public roads are cleared by municipalities. The availability of special snow blowers suitable for snow loading onto trucks can ease this task considerably. All removal work should be carried out in accordance with a plan (see 4.7.3).

4.7.23 *Snow bank heights.* The permissible height of snow banks at the side of runways and taxiways is limited (see *Airport Services Manual*, Part 2 — Pavement Surface Conditions, Figure 7-1). Where the winter climate results in a deep frost, the unpaved ground normally gains a good load bearing capacity and can support heavy vehicles thus enabling them to drive on and reduce snow bank heights outside the paved surfaces. In other climatic regions wider paved shoulders are required to allow snow blowers of high efficiency to disperse the snow piled up beyond the normal paved edges.

4.7.24 *Protection of radio aids.* Radio navigation aids, especially the glide slope part of ILS is susceptible to accumulation of snow. The glide slope effective transmitter antenna heights are reduced by the snow layer and glide slope angles may change. Also electrical coupling to ground elements will increase thus affecting the antenna impedance. Snow heights in the sensitive area of the antenna should be kept below 0.9 m.

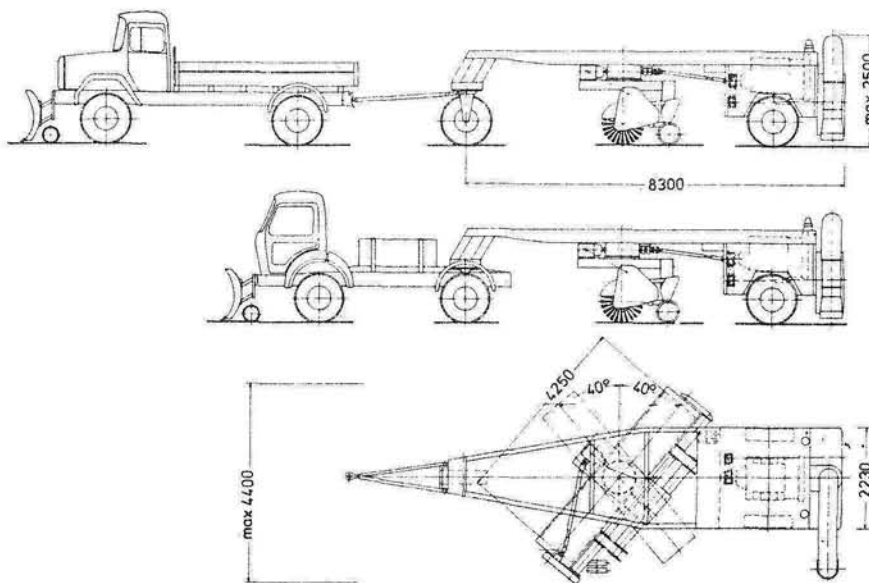


Figure 4-4. Combinations of snow plough and sweeper

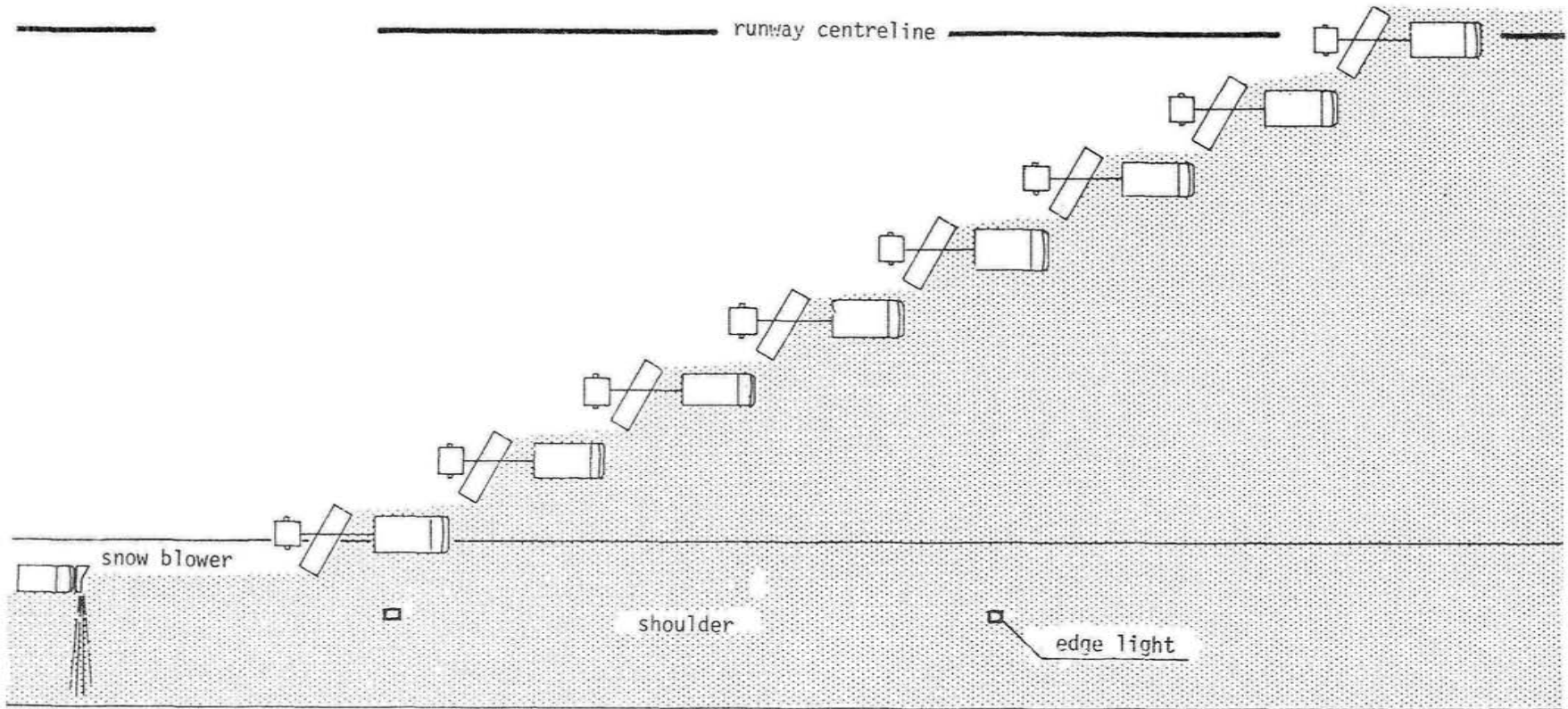


Figure 4-5. Runway snow clearing with sweepers and snow blowers, suitable for thin layers of snow

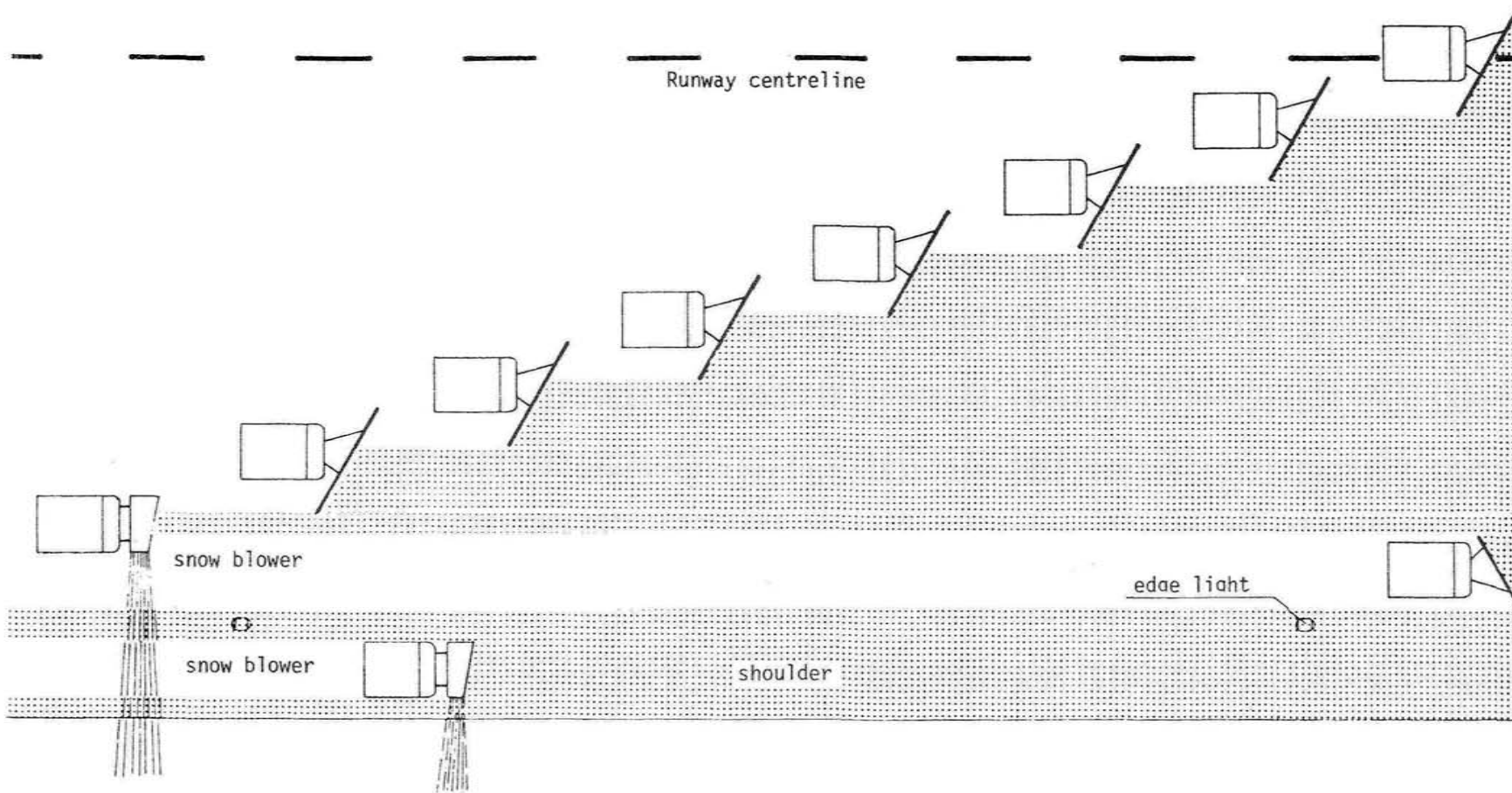


Figure 4-6. Runway snow clearing with ploughs and snow blowers

4.7.25 *Snow fences.* For protecting important electronic devices (antennas, etc.) from snow drifts, non-magnetic snow fences should be provided at the windward side of such facilities.

Surface de-icing

4.7.26 Ice conditions on paved surfaces can be improved by:

- thermal de-icing
- chemical de-icing
- sanding.

4.7.27 *Thermal de-icing.* Pavement heating by electrical methods or a warm water pipe system has limited application, since energy costs are rather high. Where such systems are installed they serve pavement surface sections of aprons, e.g. aircraft stands served by passenger loading bridges, or ramps and bridges in the airport's taxiway or road network.

4.7.28 Thermal de-icing is also done by means of flame throwers. The flame nozzle is directed towards the ground and moved over the iced surface slowly to allow the ice film to melt. The working speed has to be carefully adjusted to the particular situation to avoid damaging the pavement due to the effects of inducing high thermal stress which may cause the cracking of surface material. Flame melting has proven to be a slow procedure. Like all thermal de-icing methods, energy consumption is considerable. Another problem is that flame melting is not a preventive measure against subsequent refreezing.

4.7.29 *Chemical de-icing.* Chemical de-icing material must be non-corrosive, non-toxic, not flammable and should comply with local rules on environmental protection. It should also not be harmful to the pavement material or have a detrimental effect on the friction characteristics of the surface. Dry and liquid materials have proven to be effective for rapid ice melting. Most important is their quality to prevent refreezing, thus keeping the movement area clear after treatment. The efficiency of chemical de-icing material depends widely on the climatic conditions, i.e. prevailing temperature ranges. At very low temperatures chemicals have no melting qualities at all. For efficient dispersal, spreading or sprinkling equipment should be used to treat large surface areas in a short time.

4.7.30 *Sanding.* Slippery surfaces at very low temperatures have to be sanded. This task is carried out by spreader vehicles in the same way as on public roads. The material can be fine gravel or fine grains of crushed stone. For details, see the *Airport Services Manual*, Part 2 — Pavement Surface Conditions.

4.7.31 *Combined de-icing methods.* Many airports have developed their own methods of combining different de-icing techniques. Well-known combinations are:

- dry chemicals with sand
- liquid chemicals with sand
- dry and liquid chemicals.

No rules can be given on the application. Experience must prove the efficiency for the various characteristic conditions to be found at an airport during the winter season. Also, costs for purchasing chemicals can determine the authority's preference for certain combinations.

Surface anti-icing

4.7.32 Freezing rain or rain on frozen ground will create the most severe surface icing, since the droplets adhere perfectly to the pavement surface. Whenever the weather forecast predicts the possibility of freezing rain or rain during periods of frost, the surfaces should be treated with chemical anti-icers or de-icers in advance of the rain.

Personnel training

4.7.33 Personnel controlling winter service vehicles should be trained carefully. The training course has to cover the following items:

- *Radiotelephone.* Personnel must know correct use of radio equipment and phraseology so that any misunderstanding will be avoided.
- *Removal procedures.* Personnel must be fully familiar with the usual and the exceptional procedures for snow removal, anti-icing and de-icing.
- *Operation of equipment.* Personnel must be fully familiar with the winter service equipment so that they can handle it easily.
- *Airport.* Personnel must be familiar with those parts of the airport where they will have to operate the vehicles.

Chapter 5

Drainage

5.1 GENERAL

5.1.1 Drainage of the airport area is necessary:

- to maintain sufficient bearing strength of the soil for the operation of vehicles and/or aircraft at any time during the year
- to minimize the attraction of birds and other animals representing a potential hazard to aircraft.

5.1.2 Surface drainage is required to clear all parts of the movement area of standing water and prevent the formation of ponds or puddles. The quick run-off of water is particularly important on runways to minimize the hazard of aquaplaning. Reference is made to the *Airport Services Manual*, Part 2 — Pavement Surface Conditions.

Layout

5.1.3 For practical reasons an airport should have two drainage systems, one system which drains “clean” areas such as runways, taxiways, aprons, service roads, public roads and parking lots, and another system which drains areas more likely to be polluted by oil, grease or chemicals such as hangars, aircraft maintenance areas, workshops and tank farms (see Figure 5-1).

5.1.4 The drainage system intended to serve the “clean” area may be built in a way to sink the drain water (from precipitation) into the adjacent ground. Where the natural ground is not suitable to drain the surface water it must be collected in slot drains or other artificial sinks which are connected with a drain pipe, culvert or canal ducting the water to nearby creeks, rivers, lakes, etc. To protect these natural water courses from pollution, collector basins with oil separators should be installed.

5.1.5 The drainage system intended to serve hangars, workshops, tank farms and other pollutant-generating areas should be connected to a regular sewage system which ducts the water to sewage treatment plants. For pre-treatment the collected drain water should pass through fuel separators before entering the sewage culvert.

5.1.6 Generally, the airport operator will have to comply with rules on water treatment issued by the national or local authorities responsible for water conservation, water supply and environmental protection. The layout of airport drainage systems depends on local conditions and so does the maintenance programme.

5.2 CLEANING OF SLOT DRAINS

5.2.1 To facilitate the cleaning of slot drains, openings should be provided at 60 m intervals along the whole line. They must give good access to the bottom of the slot drain and serve as sand traps at the same time. Cleaning of a slot drain can be carried out most effectively by flushing all sections with water at high pressure, forced into the duct at 18 MPa or more. Where necessary, mud and sand deposits must be vacuumed off by special mobile cleaning equipment.

5.2.2 The time intervals for cleaning depend on local experience with drain lines. One cleaning action per year has proved to be the minimum. When sand has been used for winter services a second cleaning right at the end of the winter is recommended. Regular inspections should be carried out to detect the need for additional cleaning. After sandstorms or heavy rain showers which flood unpaved areas near the slot drain, immediate checking of the drain capacity is highly recommended.

5.3 DRAIN PIPES OR CULVERTS BETWEEN SURFACES AND COLLECTOR BASINS

5.3.1 Drain pipes should have manholes at intervals to allow cleaning the pipe of deposits. Sections between consecutive manholes should not exceed 75 m and manholes should have a cross section of at least 1 m². The cleaning can be accomplished by means of flushing with water at high pressure.

5.3.2 Time intervals for cleaning depend on local experience. Cleaning once a year seems to be the operational minimum to ensure good drainage capacity of pipes

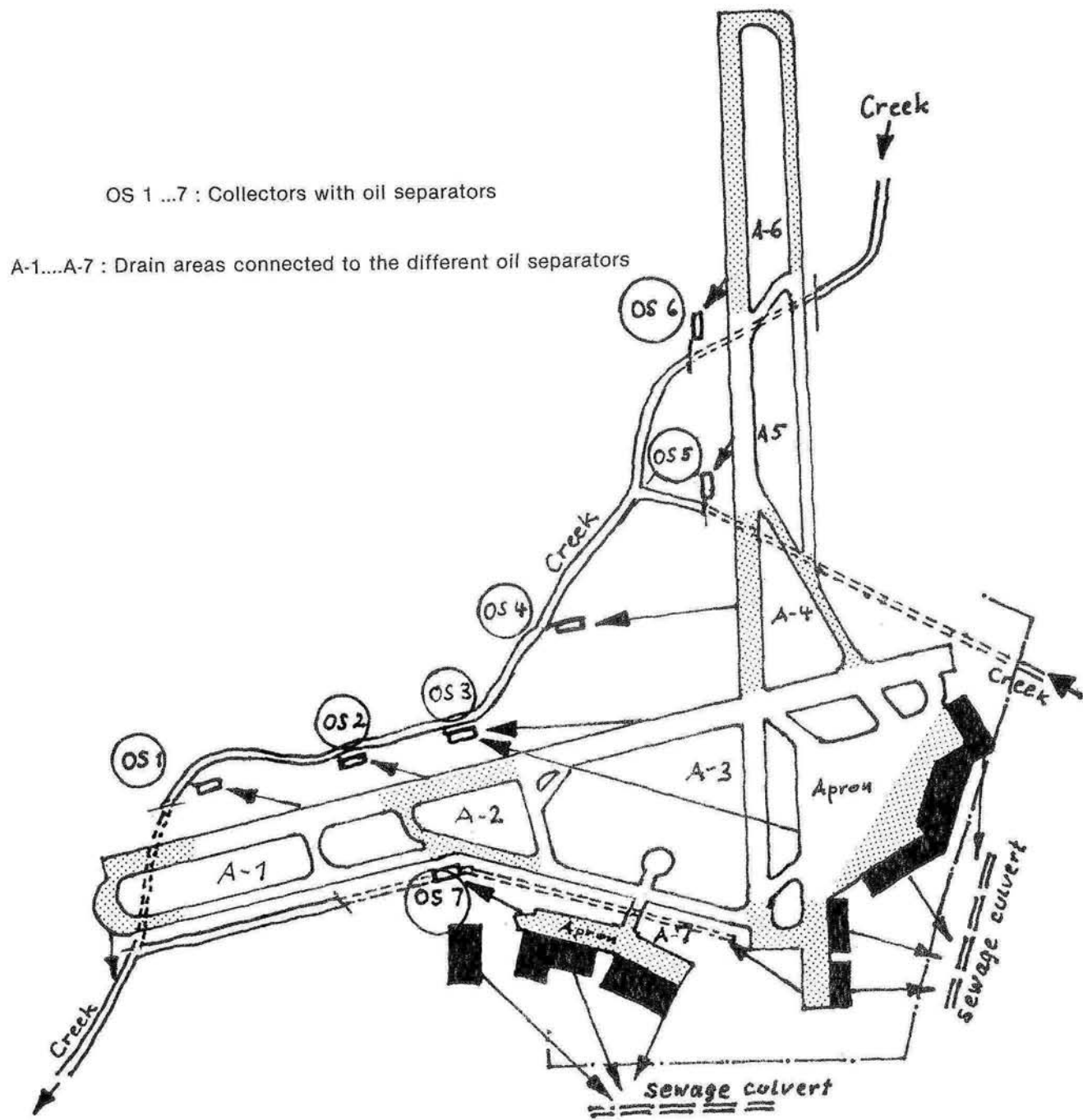


Figure 5-1. Example of an aerodrome drainage system where all drain water from hard surfaces is passed through oil separators

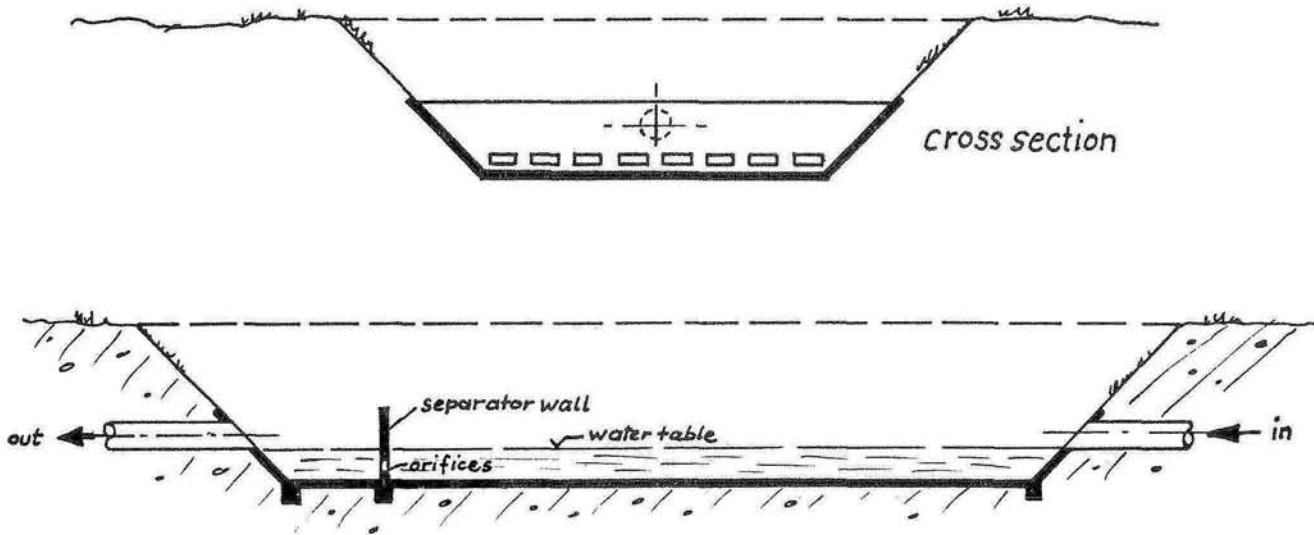


Figure 5-2. Drain water collector with oil separator

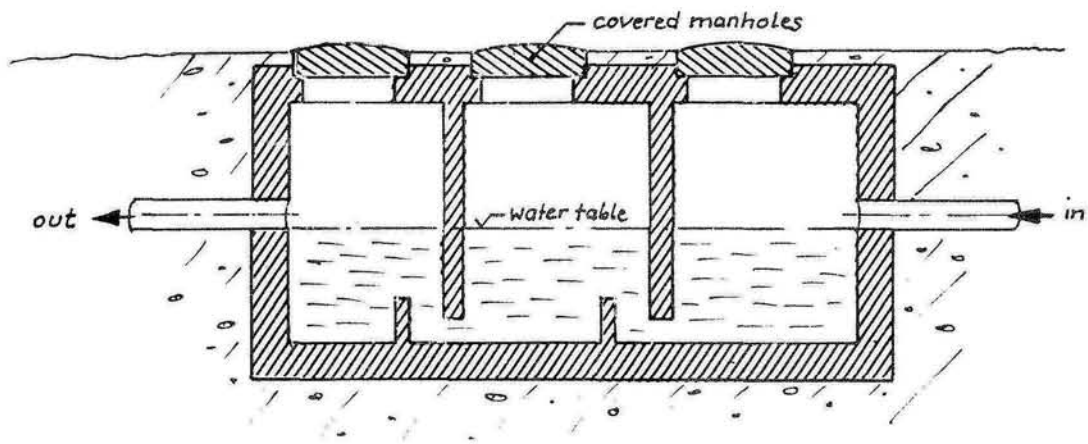


Figure 5-3. Sub-surface fuel separator

and culverts collecting surface water from precipitation. Where the cross section of the pipes are less than 30 cm, cleaning twice a year may be necessary.

5.4 OIL AND FUEL SEPARATORS

5.4.1 Oil separators are integral parts of water collectors. The number and size of collectors depend on the drained area and quantity of precipitation (see Figure 5-1). The capacity of a separator shall be such that the flow speed will at any time be slow enough to prevent oil passing by the separator wall into the collector basin. The oil layer depth at the surface of the separator must be checked weekly and oil pumped off when necessary (see Figure 5-2).

5.4.2 The bottom and the banks of the drain water collector basins should be kept clear of plants. Embankments should be mowed regularly. Once a year the bottom should be cleaned.

5.4.3 Fuel separators are components of the drainage system of hangars, workshops and other technical working areas which must be provided with separator installations. Their capacity will be determined by the expected maximum drain water through-put. The amount of trapped oil and/or fuel should be checked in accordance

with a maintenance plan for the facility, describing the time intervals of pumping off oils. The intervals must be derived from local experience. They can vary widely. To avoid accidental overflow of the fuel collector, automatic monitoring can be provided. Oil and fuel separated from the drain water must be pumped or carried to a demulsification plant (see Figure 5-3).

5.4.4 For removal of oil and fuel from separators the employment of specialists (under contract) can be practical since special tank vehicles are required and the deposits have to be removed in accordance with environmental rules on the treatment of waste oil.

5.5 WATER HYDRANTS

5.5.1 The capacity of the airport's water supply system should comply with the requirements of fire fighting. All valves and flaps in the pipeline network should undergo functional testing once a year. Additional monitoring by checking the water consumption weekly can be useful to detect undiscovered leakages at an early date.

5.5.2 All fire hydrants including those at buildings must be checked regularly (see 9.12.1). Any subsurface hydrants should be kept clean of soil or mud so that they can be found without delay in cases of emergency.

Chapter 6

Maintenance of Unpaved Areas

6.1 GENERAL

6.1.1 The maintenance of unpaved areas on an airport is essential for the following major reasons:

- a) safety of aircraft on operating areas (this concerns runways, taxiways, strips and runway end safety areas);
- b) safety of airborne aircraft (this concerns areas on the airport and in its nearby vicinity within the defined flight pattern where trees and bushes may grow); and
- c) reducing bird hazards to aircraft (this concerns grass land within the airport's boundaries).

6.1.2 The maintenance of unpaved areas need not necessarily be carried out by the staff of the airport operator. The airport operator may contract with nearby farmers who will take care of the task upon advice. The farmers can use the grass for cattle feed and can provide their own equipment. Work performed by contractors must be monitored by authorized personnel to safeguard air traffic safety requirements.

6.2 MAINTENANCE OF GREEN AREAS WITHIN STRIPS

6.2.1 Requirements as to the quality of surface grading and bearing capacity of strips and shoulders are specified in Annex 14, 3.2, 3.3, 3.4, 3.8 and 3.9.

6.2.2 After construction work in strip areas, attention should be paid to retain the specified surface conditions. Where the bearing capacity has been reduced it must be improved by soil compaction. Humps and depressions should be eliminated. To protect the surface against blast erosion a sound matting of grass should be provided. On normal soil this condition can be achieved by seeding with grass. Poor soils will need fertilizing. Sometimes this can be accomplished by adding arable soil or humus from composted hay.

6.2.3 The use of urea for winter service on runways and taxiways will often kill the grass along the edges of

treated pavement areas. If it is not possible to avoid this damage by reducing urea consumption, seeding must be repeated regularly after the winter period. In many cases soil replacement will become necessary. A biologically acceptable sealing material may have to be used for fixing the loose soil containing the fresh seed until the grown grass is capable of protecting the soil against blast erosion. Where poor drainage along the edges of pavement increases erosion effects, hard surface shoulders may have to be built to overcome the problem.

6.2.4 Grass in the strips should not exceed 10 cm in height. Regular mowing will be necessary to keep the grass low, the frequency depending on the climate. The cut material should be picked up since otherwise it might be sucked into jet engines, thus creating a potential hazard to aircraft operation. Where applicable, growth retardant can be used to control growth rate. Its application, however, is often limited by national or municipal rules for ground water protection, since some growth retardant chemicals can detrimentally affect the quality of drinking water. As these chemicals may also be expensive, it is useful to consider their cost effectiveness in comparison to more frequent mowing.

6.2.5 Mowing attracts birds as the freshly mowed areas are rich in bird food. To minimize the ever-present risk of bird strikes, mowing should take place preferably before periods of lowest air traffic. In other cases, bird protection measures may have to be increased after mowing to keep the collision risk low.

6.3 MAINTENANCE OF GRASS ON UNPAVED RUNWAYS AND TAXIWAYS

6.3.1 Grass height should be kept as low as practicable on unpaved runways and taxiways as rolling drag increases markedly with grass height. Take-off distances can increase by some 20 per cent when grass on runways is too high. For treatment refer to 6.2.4 and 6.2.5.

6.4 MAINTENANCE OF GREEN AREAS OUTSIDE STRIPS

6.4.1 The major reason for maintenance of green areas of an airport outside the strips is to control animal life within the airport boundary. While generally it is not too difficult to keep wild animals that might create collision risks out of the area, for instance by means of fencing or hunting, the bird population is very difficult to control. The aim of measures concerning grass surface cultivation is to minimize bird population in order to keep the bird strike hazard as low as possible.

Note.— Sheep pasturing cannot be recommended as a suitable means for maintaining grass surfaces on an airport. It does not replace mowing since sheep do not eat all types of grass, thus leaving numerous clusters on their way. Furthermore, sheep unduly compact grass mats with their hooves and leave excrement which attracts insects and thereby birds.

6.4.2 Maintenance of grass surfaces should be determined by the individual needs of the site, i.e. the local species of birds and their habits. Most species prefer low grass areas for food searching; conditions for finding food are better and watching out for enemies is facilitated by good visibility in all directions. For keeping large numbers of birds from settling, the optimum grass height has been observed to be around 20 cm. Only the smallest birds of body mass less than 20 g will prefer such meadows for residence. They are, however, less dangerous for aircraft than heavier birds.

6.4.3 Recent research indicates that dry grass land offers more food to birds than wet land. Draining should therefore be restricted to areas such as unpaved runways, taxiways and strips where good bearing capacity of the soil is necessary in the interest of air safety. In other parts of the airport swampy patches can be tolerated as long as ponds are precluded that would attract aquatic birds.

6.4.4 When the grass height is kept to not less than 20 cm, as protection against birds the mowing frequency will be low. One or two cuttings per year will suffice in many climatic areas to meet this grass height requirement. The grass should be mowed down to a height of about 10 cm and the cut grass should be picked up to prevent detrimental “choking” effects to the grass mats under a probably heavy hay coverage. Consequential composting effects on the mat also produce great numbers of microscopic organisms, insects, worms etc., and again, attract birds to the area. Since immediately after mowing the area

attracts birds searching for food, the most favourable period for mowing with regard to local birds’ habits should be chosen.

6.4.5 Maintenance work on grass lands should include special methods to diminish the number of mice. Where mice population exceeds a “normal” rate, birds of prey may be attracted which, due to their flight techniques and body mass, create the most severe bird strike hazard. Mice populations will then have to be controlled by using suitable chemicals.

6.4.6 Trees and bushes need no special maintenance except for controlling their height. When trees penetrate an obstacle limitation surface they should be shortened. One technique is to cut the trees or bushes but leave their roots in the ground so that they may sprout again. To discourage birds from settling, all bushes carrying berries should be eliminated from the airport.

Note.— The height of trees in the approach and departure areas outside the airport boundary must be controlled for air traffic safety reasons. To minimize the extent of cutting or shortening of trees, cutting can be done more frequently.

6.5 EQUIPMENT FOR MAINTENANCE OF GRASS

6.5.1 As there are different types of mowers available the choice should be determined by local conditions, i.e. the size of the area to be maintained and the types of grass and plants on it. The following types are being used on airports:

- spindle mowers
- cutter bar mowers
- rotary mowers
- flail mowers.

6.5.2 Normally spindle mowers are trailing equipment. They are efficient on areas of low grass height, such as unpaved runways, taxiways etc. With the mowers arranged in groups (so-called mounted gangs, see Figure 6-1), strips up to 8 m wide can be mowed in one run. Under favourable conditions the capacity can be 7 hectares per hour. Separate loaders are required to pick up the cut grass.

6.5.3 Cutter bar mowers are appropriate for both high and low grass. The cutter bar is generally a separate piece

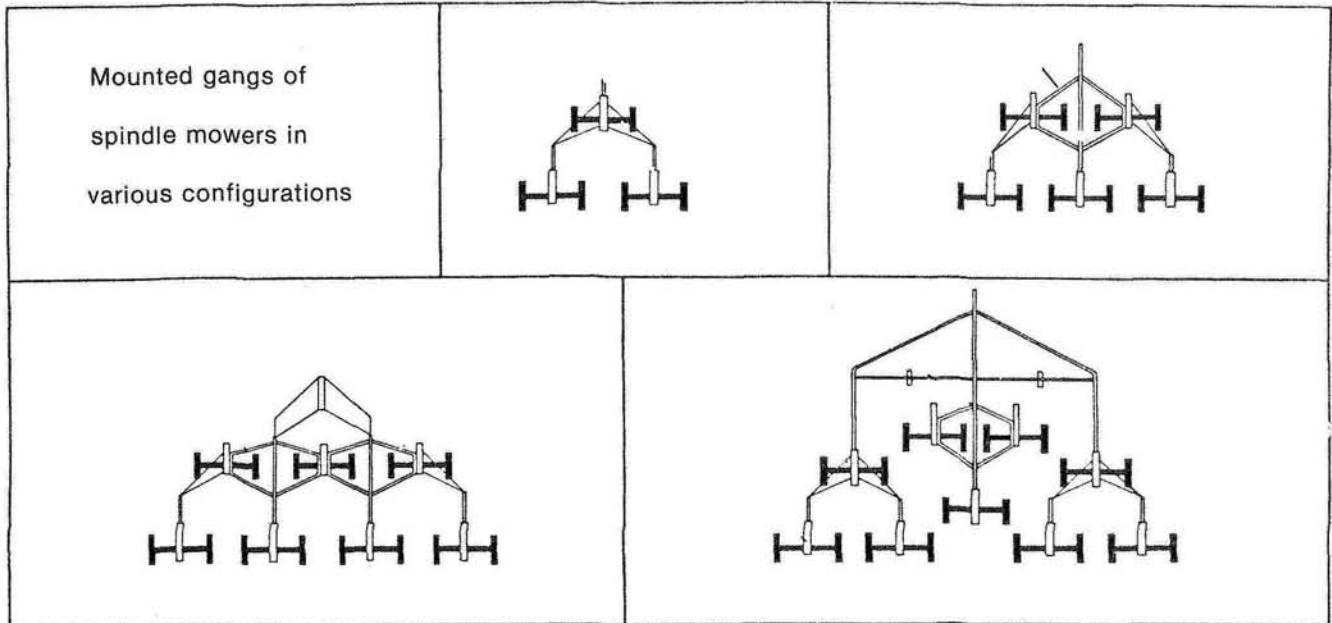
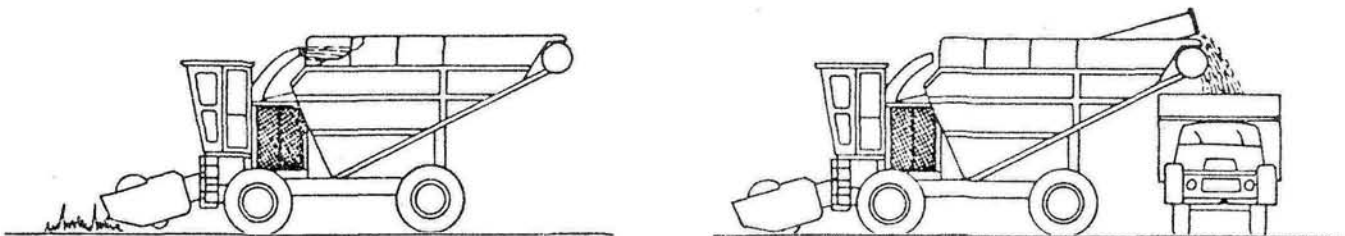


Figure 6-1. Use of spindle mowers in airport maintenance



Standard two-wheel drive container unit with hydraulic unloading.

Figure 6-2. Hay loader combined with mowing equipment

of equipment attachable to various tractor types, often in combination with a trailed self-picking hay loader. The cutting width is less than 2 m, thus resulting in a low mowing capacity of about 1/2 hectare per hour. A special type of bar mower, the so-called chaff-cutters, cut strips up to 4 m wide and, in combination with hay loaders (see Figure 6-2), achieve a mowing capacity of almost 2 hectares per hour.

6.5.4 Rotary mowers are specialized on extremely high grass. They are produced in trailer form and mow a strip up to 5 m wide, thus achieving a mowing capacity of 4 hectares per hour.

6.5.5 The flail mowers are most effective for meadows with harder types of grass and plants, including low bushes. They are attachable to various types of towing equipment, have a maximum mowing width of 5 m and achieve a capacity of some 2 hectares per hour.

6.5.6 Capital and operating costs of the different types of mowing equipment vary widely, trailed equipment being

cheaper. Operating costs for automotive equipment including automatic hay loading equipment will be three to four times higher. However costly the equipment and procedures are, the reduced bird strike hazard at the airport is a benefit.

6.6 TREATMENT OF CUT GRASS

6.6.1 Since grass should be removed immediately after mowing as a protection against birds and for other safety reasons, considerable quantities of cut grass will be collected on larger airports. If grass cannot be given away to nearby farmers or ranchers, two options exist:

- a) *composting at a suitable site and recycling as fertilizer for the airport, or for sale to gardeners or farmers. Cut grass needs approximately three months for composting before it is usable;*
- b) *disposal in a dump. The dump should be far away from the airport since cut grass will, without proper treatment, decay producing a wet and very polluting waste.*

Chapter 7

Removal of Disabled Aircraft

7.1 REMOVAL PLAN

7.1.1 If a disabled aircraft is on a part of the airport where it interferes with the movement of other aircraft, it has to be removed as quickly as possible. Aircraft removal is a rather complex procedure touching quite a number of responsibilities of different parties, such as aircraft registered owner, national authority for air safety and accident investigation, airport operator, owner of removal equipment and maybe others.

7.1.2 The procedure has to be performed in compliance with the removal plan worked out for the airport to satisfy local circumstances. Reference is made to Annex 14, 9.3. Guidance material on the establishment of the removal plan, procedures, techniques, methods and equipment is given in the *Airport Services Manual*, Part 5 — Removal of Disabled Aircraft and on the operation of the disabled aircraft removal service in the *Airport Services Manual*, Part 8 — Airport Operational Services.

7.2 PERSONNEL TRAINING

7.2.1 Regardless of how removal responsibility and removal performance is agreed, special equipment should be available and staff should be trained thoroughly to handle the equipment in the event of an aircraft removal. Training of the personnel assigned to this task should take place at least once a year, following a detailed and specified training programme. The programme has to include instruction on theoretical measures and methods to be applied and practical training in handling the equipment. It should be continuously updated according to the most recent knowledge and experience available on aircraft removal techniques.

7.3 STORAGE OF EQUIPMENT

7.3.1 Equipment should be stored in a manner to ensure quick access at any time. Consolidating equipment into transportable units is useful. This not only facilitates access in cases of a removal action but also for equipment inspection and maintenance procedures. Equipment packed in boxes or on pallets should be protected from the effect of weather such as wetness, moisture, heat, sunshine (ultraviolet radiation) which may rapidly destroy wooden, textile, plastic or rubber material. Protection must also be taken against vermin (mice, rats, termites, etc.). Only by careful storage and regular inspection will it be ensured that the equipment is in good condition and that any aircraft removal operation will be successful and expeditious. Furthermore, careful storage will extend the life of the equipment: important to the owner from an economical aspect.

7.3.2 All removal equipment should be stored at one location, if possible. The units should be designed for easy transport and loading, and should be stored in such a manner as to minimize the risk of damage by equipment and vehicle movements. Clear marking of each unit is necessary to allow quick identification of the contents.

7.3.3 In addition to the need to protect equipment from detrimental climatic conditions, no material should be stored close to the equipment which would cause damage to it. Wrapping will help to protect the equipment from contamination.

7.3.4 Wooden material, e.g. plywood sheets and cribbing timber, has to be stored flat to avoid warping. All steel material needs an oil or paint finish to protect against rust.

7.3.5 All pieces of the stored equipment should be listed. The list should identify their location within the store and show the maintenance needs.

7.3.6 A plan should be prepared that shows which vehicles are to be used for the transport of removal equipment and how the vehicles are to be available in the event of an aircraft removal action.

7.4 MAINTENANCE OF REMOVAL EQUIPMENT

7.4.1 Regular inspection of all equipment is recommended to ensure that the equipment sets are complete and serviceable at all times. Some pieces of equipment may need maintenance work at periodic intervals.

7.4.2 *Pneumatic lifting bags* should be checked at yearly intervals where the climate is dry, moderate or cold, and at half-yearly intervals where the climate is tropical. More frequent inspections are recommended when the bag material has suffered from detrimental storage conditions such as high heat, direct sun radiation or wide temperature variations. The maintenance programme for lifting bags should include:

- cleaning of contamination, if necessary
- inflation up to the checking pressure as indicated by the bag manufacturer
- repair of all deficiencies or damage
- correct preparation for storage, i.e. dry surfaces, air valves protected by caps, surface powdered with French chalk
- wrapping of folded bags to transportable packs.

Packed bags which have been stored below freezing temperature should not be unrolled before allowing a slow warming up over a period of some four hours or more. Sudden temperature changes are to be avoided in order to protect the bag material.

7.4.3 *Protection pads* (foam rubber pads) which are used to protect the lifting bags should be kept in good condition. To ensure this they should be inspected at half-yearly intervals. When damaged, they should be repaired or replaced.

7.4.4 *Air hoses* should be stored wound up on hose reels. They should be kept clean inside and out to protect the rubber material. Ends should be closed by caps and reels should be covered. Once a year hoses must be unwound from their reels and stretched out on clean ground. A functional test can be accomplished by connecting them to the console module and applying air pressure. This procedure allows a check for any damage and the serviceability of all connexions. Any deficiencies discovered should be made good by repair or replacement.

A six-month check for integrity and cleanness of hoses is recommended in addition to the inspection.

7.4.5 *Console module* maintenance work should be carried out at least once a year. The maintenance programme should include checking for:

- integrity
- damage to any components
- serviceability of valves and stopcocks (function test under pressurized air according to manufacturer's advice)
- function of pressure gauges.

7.4.6 *Air compressors* should be subjected to a test run of at least five minutes once a month. In conjunction with this test the following should be checked:

- tire pressure
- oil content (compressor unit and engine)
- diesel content of tank
- battery capacity and acid content
- cooling water content (in cold climate areas anti-freeze concentration)
- any other technical details in accordance with the manufacturer's advice.

In addition a rolling test should be carried out every six months to check wheel brakes and lamps of the vehicle.

7.4.7 *Hydraulic jacks* should be inspected every six months in conjunction with a test run at which time the equipment can be checked for corrosion, oil leakage or any damage in accordance with the manufacturer's advice. Immediate repair is necessary when the jacks' function is affected by a deficiency.

7.4.8 *Winches, cables and ropes* should be inspected every six months for mechanical damage. Special attention should be given to bends and corrosion of steel cables and other load bearing lifting equipment. Stress tests have to be carried out in accordance with relevant national safety and/or manufacturer's advice.

7.4.9 *Drainage pumps, flood lights and diesel generators* should be inspected monthly for mechanical damage, oil and fuel leakage, battery capacity and acid content, fuel and oil content. All regular maintenance work should be carried out in accordance with the manufacturer's advice. Discovery of damage or deficiency should lead to immediate repair. A test run should be part of the maintenance programme.

7.4.10 *Additional equipment* consisting of:

- plywood sheets
- steel and aluminium plates
- cribbing timber
- steel spikes for crib assembly
- ground reinforcement mats (trackways or other)
- earth anchors
- copperloy coated steel grounding rods, cables and clips

- fencing material and warning signs
- tools such as bolt cutters, sheet metal shears, picks, shovels, crow-bars, hammers, and saws

should be inspected half-yearly for completeness and proper condition. Where damage such as corrosion, cracks, distortion or wetness is discovered, repair or replacement of the damaged equipment should be undertaken.

Chapter 8

Maintenance of Equipment and Vehicles

8.1 GENERAL

8.1.1 By preventive maintenance, facilities on an airport can be kept in such a condition as to maintain safety, regularity and expeditious operation of air traffic. Reference is made to Annex 14, 9.4. This specification covers the following equipment and vehicles:

- rescue and fire fighting vehicles
- devices for snow and ice removal
- devices for applying sand and de-icing agents
- pavement surface friction measuring devices
- sweepers for removal of contaminants from aircraft operating areas
- mowers and other vehicles for control of grass height on unpaved areas.

8.1.2 There also may be many other vehicles in operation for aircraft ground handling (fuel, water, electric energy, high and low pressure air), passenger handling, freight handling and transport. All these vehicles require preventive maintenance work in accordance with the manufacturer's advice. Operators of the vehicles have to make appropriate arrangements for keeping their equipment serviceable at any time as part of the airport maintenance task.

8.2 ORGANIZATION OF VEHICLE MAINTENANCE

8.2.1 Airport vehicle maintenance can be organized according to three different principles:

- a) maintenance is carried out by the airport in its own workshops;
- b) maintenance is carried out by contractors in workshops located on the airport; or
- c) maintenance is carried out by contractors outside the airport.

8.2.2 The main reasons for providing workshops at the airport are:

- a) the difficulty of moving specialized and very big vehicles, which are not licensed for use on public roads, outside the airport area; and
- b) the time and manpower needed to move vehicles from the airport to remote workshops and vice versa.

8.2.3 Reasons for providing airport-owned workshops are:

- a) personnel can be supervised by the airport management and their schedule or work adjusted to fit the airport's needs;
- b) personnel can be trained to specialize in maintenance tasks for all airport equipment and will gain much experience;
- c) personnel can be organized in such a way as to carry out stand-by tasks outside the normal duty hours;
- d) personnel can carry out maintenance tasks on installed equipment; and
- e) other duties like snow removal, aircraft removal, assistance in emergencies, etc. can be assigned to workshop personnel upon short notice.

8.2.4 Reasons for contracting with maintenance companies outside the airport are:

- a) availability of expert knowledge, plants and tools for standard equipment overhaul and repair (e.g. motors, gear boxes, generators, drive axles of standard automotive design);
- b) lack of own personnel or specialists for economic reasons (e.g. number of vehicles too low to warrant workshop installations and manning); and
- c) need to overcome peak or bottleneck situations.

8.3 SCHEDULE OF VEHICLE MAINTENANCE

8.3.1 The basis for vehicle maintenance is a schedule of the services required and the intervals between servicing. The schedule can be developed by the maintenance workshop or by the vehicle operating branch. For maintenance of standard vehicles the manufacturer's advice

should be considered. In the absence of such recommendations the schedule should be based on experience with maintenance needs.

8.3.2 Inspection schedules for self-driven vehicles can be related to the kilometres driven or operating hours recorded. For other equipment, fixed time intervals are practical. Special procedures are applied for winter equipment, which should undergo inspection and overhaul twice a year, i.e. once before the winter season and then again shortly after it.

8.3.3 Fixed time intervals offer the advantage of a well-balanced workshop utilization. Equipment with a low number of operating hours per year should be inspected regularly. Maintenance to protect from true wear, however, cannot be met by the fixed interval method, since the individual use of equipment is not considered.

8.3.4 Where the hours driven are the basis of the schedule, the user must maintain a record of the hours operated. The equipment user should take care to rotate the use of equipment and check the operating hours record. An easy way of controlling the operating hours can be achieved by marking the limit of the vehicle on a label attached to the driver's panel or screen. Monitoring can also be carried out by fuelling personnel.

8.3.5 The user (or proprietor) of the vehicles will define the maintenance intervals in accordance with experience, manufacturer's recommendation and workshop capacity. No standards can be given. Numbers given in Table 8-1 result from airport experience and may serve as guidance.

8.3.6 The maintenance programme is individual for each type of vehicle or equipment and depends on its function, wear and tear characteristics and manufacturer's recommendation. Inspection must be carried out by specialists.

8.3.7 In the interest of safety, operating personnel must be advised to check the functioning of all essential components, e.g. brakes, control, tires, lights every day before using any vehicle or piece of equipment. Whenever deficiencies or failures are discovered, the unserviceable equipment should be taken out of service and repair should be carried out as soon as practicable.

8.3.8 An important element of the maintenance of airport vehicles is the servicing of installed radiotelecommunication equipment, since, by the very nature of traffic control on an airport, the radiotelephone has to be serviceable at any time.

Table 8-1

Equipment maintenance intervals

Equipment	Maintenance intervals	
	km driven	Operating hours
Fire fighting and rescue vehicles, ambulances	3 000 ... 5 000	100 ... 200
Winter service vehicles (snow ploughs, snow blowers, sweeper-blowers, spread and spray vehicles)	—	100 ... 200 twice a year
Standard cars, station wagons and buses	... 5 000	—
Special passenger buses	—	100 ... 200, however at least twice year
Standard trucks, tractors (aircraft tractors)	—	100 ... 200
Self-driven aircraft handling equipment (lifters, electric power trucks, water trucks, etc.)	—	100 ... 200
Other aircraft handling equipment (dollies, stairs, etc.)	—	once or twice a year

8.4 WORKSHOPS

8.4.1 Workshops on airports should be concentrated, if possible, to form a workshop centre. The capacity and equipment to be provided depends on the workload which is a function of the size of the airport's equipment fleet. The availability of the following workshops is most useful:

- automotive engine with test bed
- chassis (garage) with paint section

- automotive electric workshop
- mounting platform and car hoist
- brake test bed
- hydraulics
- tinsmith
- washing.

8.4.2 Workshops should be manned by specialists. At intervals the personnel should be sent to equipment manufacturers for training.

Chapter 9

Buildings

9.1 GENERAL

9.1.1 Many airports are sites for various industrial activities generated by aviation or related business. The built-up area of an airport therefore can be covered by a great number of buildings, only part of which house the primary aviation functions. Typical buildings to be found on airports are:

- passenger buildings
- freight handling sheds and cargo stores
- air traffic control buildings
- aircraft hangars
- fire stations
- workshops and aircraft/engine maintenance plants
- vehicle and equipment sheds
- fuel farms and fuel tanks
- depots and silos
- aircraft catering buildings
- administration and office blocks
- hotel/restaurant buildings
- convention centres
- parking garages.

9.1.2 All these buildings require maintenance; however, little of this work is airport-specific. In the context of airport maintenance practices dealt with in this manual, normal building and technical facilities maintenance is not described. Descriptions will be limited to elements, the proper function of which is a prerequisite to efficient passenger or baggage handling, or passenger safety.

9.1.3 The building on an airport that directly affects passenger and baggage handling is the passenger or terminal building. Its purpose is the interchange between ground and air transportation, and transfers between flights. While the safety requirement is the same as for any other public facility, the outstanding requirement is for a speedy flow of passengers and baggage through the facility. Reference is made to the *Airport Planning Manual*, Part 1 — Master Planning.

9.1.4 In order to meet this efficiency requirement the following components of the terminal building should not suffer from operational deficiencies during the operating hours:

- lighting system for the passenger terminal buildings and associated landside forecourt and car parking area
- passenger flight information system
- air conditioning system
- heating system
- mechanical (automatic) doors
- baggage conveyor belts
- baggage delivery equipment in claim areas
- fixed passenger loading devices (nose loaders or loading bridges)
- lifts (elevators)
- escalators
- people movers
- fixed fire protection installations
- emergency exits.

9.1.5 A great deal of the maintenance work described in the following section is particularly appropriate to contract work. Maintenance contracts on servicing and overhaul of such facilities as automatic doors, conveyor belt systems, passenger loading bridges, lifts, escalators and moving walkways have proven to be useful and economical.

9.2 LIGHTING AND ELECTRIC EQUIPMENT

9.2.1 The complete lighting system of the passenger building and forecourt has to be checked daily. Visual monitoring should cover all lamps, illuminated signs and information boards. Any deficiencies that would adversely affect passenger orientation or handling should be corrected quickly. Other reported deficiencies should be noted for repair within the schedule of the maintenance plan.

Daily: Visual inspection of all lamps for proper operation.

Weekly: Replacement of fluorescent tubes and their ignition starters in accordance with the replacement schedule that the terminal operator has laid down in the maintenance plan.

Monthly:

- repairs which have been found necessary by inspections according to the maintenance plan for electric installations
- checking of accumulator (battery capacities)
- replacement of light bulbs according to plan.

Quarterly:

- checking of lighting control units
- adjustment of dimmers.

Semi-annually:

- checking of supply lines and cables, switches and distributors
- cleaning of plugs, contacts and terminals in the electric wiring.

Annually (or less frequently):

- cleaning of lamps
- checking of insulation capacity by overload voltage.

9.2.2 Lighting system for roads and parking lots.
Basically the maintenance programme is the same as for apron lighting systems, described in 3.3.10. A functional check during daylight, however, is not required, since the serviceability of the total system is maintained in spite of single lamp failures. The unserviceable lights can be identified more easily during regular night inspections. Other possible failures will be noticed by the operator of control desks, particularly where the lighting system is connected to a control centre equipped with appropriate electric monitoring meters.

9.3 COMMUNICATION FACILITIES

9.3.1 Means of communication in passenger terminals can be flight information boards, television monitors, loudspeakers and electric clocks. Normally such installations are self-monitoring, i.e. deficiencies are identified electronically and indicated at the technical control centre. Maintenance should include checking of:

Daily:

- control unit for flight information board
- readability of television monitors
- electric clocks' control unit
- electric circuits of the loudspeaker system.

Whenever possible, adjustments should be carried out immediately.

Semi-annually: Servicing of all components of:

- flight information boards and television monitors
- electric clock system
- amplifiers for the loudspeaker system.

Annually: Cleaning of information boards, e.g. all drives and flaps of electro-mechanical systems, screens or lights used for giving information visually to passengers.

9.4 AIR CONDITIONING SYSTEM

9.4.1 The operational condition of the system has to be monitored constantly from the control centre so that any failures can be detected early and corrective action taken in time. Maintenance should include checking the following:

Daily: Inspection of all machinery and air ducts concerning temperature, pressure and leakage including:

- moisture controls
- energy consumption of electric motors
- freezers
- cooling water flow meters
- timer control.

Findings should be recorded and, in case of deficiencies, remedial action taken.

Weekly:

- activated carbon filters; changing when necessary
- other air filters; changing when necessary
- energy consumption of freezers (refrigerators), air supplies, fans, electric motors, flaps, valves, regulators and pumps
- insulation for damage
- cone belts.

Monthly:

- servicing of all air ducts, fans, electric motors, flaps, valves, regulators and pumps
- cleaning of all dirt traps in the pipe network
- energy consumption record.
- air ducts

Semi-annually:

- servicing of refrigerators and switching units
- cleaning of heat exchangers and fans
- output data and adjustment of performance of all components to desired standards

- servicing of hot air curtains including air filters
- cleaning of fire protection gates and other closing devices in the system.

Annually:

- chemical and mechanical cleaning of condensers and evaporators
- servicing of fire protection gates.

Unscheduled: Activated carbon has to be replaced at intervals of between two and three years according to experience with the air conditioning system in use.

9.5 HEATING FACILITIES

9.5.1 Maintenance of heating facilities should include checking of:

Daily:

- temperatures, pump and regulator performance
- water heaters, pumps and valves for leakage
- serviceability of safety installations.

Weekly:

- servicing of packings at pumps and valves
- limiter gauges at heating ovens
- switching units
- monitoring of the indicators for energy consumption and data comparison with expected theoretical quantities.

Monthly:

- cleanliness in burner chambers and cleaning if necessary
- regulators by comparison of true with theoretical performance data
- repair or replacement of deficient pumps, if necessary, according to the record of daily checks
- lubrication of taps and valves
- inspection of stand-by boilers for potential corrosion.

Semi-annually: The following tasks must be carried out before or after the heating period, i.e. when burners are turned off:

- checking of heating elements (radiators) and their valves
- repair of faulty valves and packings
- removal of air from pipes and heating elements
- decalcifying (deliming) of heater coils in boilers
- repair of heater coils in water boilers
- cleaning of dirt traps and non-return flaps.

Unscheduled: Indicators and consumption meters should be checked and calibrated at intervals of two or more years to ensure reliable and precise system monitoring during the heating period.

9.6 AUTOMATIC DOORS

9.6.1 Automatic doors may be operated electrically, hydraulically or pneumatically. Any observed deficiencies of such doors should be reason for immediate repair or closure of the unserviceable entrance/exit to avoid damage to the door and — even more important — to avoid the risk of injuries to people. Unserviceable automatic doors should be marked by warning signs that at the same time give guidance to people on where to walk. Maintenance should include:

Weekly:

- checking of control mechanism at all automatic doors
- adjustment of the level of sensitivity if necessary
- at pressured air operated doors: checking of compressed air tanks and pipes for tightness.

Annually:

- full overhaul including cleaning of the door drives and at compressed air operated doors also the overhaul of compressors
- checking on wear at activator rods, chains and guide rails of the driving mechanism
- replacement of worn parts
- checking of serviceability and if necessary adjustment of all safety installations.

9.7 BAGGAGE CONVEYOR BELTS (FIXED INSTALLATIONS)

9.7.1 Baggage conveyor belts are normally installed between baggage check-in areas and sorting or baggage make-up areas as well as between unloading stations for incoming bags and luggage reclaim areas. To ensure uninterrupted operation the condition of all belts has to be monitored continuously. Short cracks at the edges can be eliminated by cutting off the damaged edge material. Maintenance should include:

Weekly:

- visual checking of belts for damage such as cuts and cracks
- checking on smooth movement and low noise; whenever necessary, replacement of noisy or squeaking rollers
- adjustment of loose spring rollers
- adjustment of belt movement and stress.

Monthly:

- cleaning of joints and dirt trapping boxes
- removing of paper and other waste from underneath the belt by vacuuming.

Annually:

- checking and overhaul of drives
- cleaning of driving motors, oil change or refilling of gear boxes
- cleaning and lubrication of driving chains.

9.8 BAGGAGE CLAIM UNITS

9.8.1 *Weekly maintenance* should include checking for:

- damage and cracks
- smooth movement and low noise, and, when necessary, replacement of noisy rollers.

9.9 PASSENGER BOARDING BRIDGES

9.9.1 Passenger boarding bridges (fixed and apron drive) are exposed to weather impact. Major maintenance work should follow immediately after rain or winter seasons to counteract corrosion.

Bridge gear and lift device maintenance should include:

- weekly check of tires for surface damage and wear and replacing if necessary
- inspection of wheel brakes
- inspection of electric driving motors and cleaning of drive chains
- inspection of lifting jacks for wear
- checking of lubrication of lifting jacks
- inspection of hydraulic system

Intervals of regular maintenance work depend on experience and/or manufacturer's advice.

Bridge body maintenance should include:

Weekly:

- checking of all bridge movements, i.e. extension, retraction, lowering, raising and steering.

Semi-yearly:

- checking of bearings and their lubrication
- replacement of worn or corrosive rollers
- checking of drive chains and adjustment of chain stress
- checking of floor covers for damage and fixing or replacement of loose parts
- warm water cleaning of outer skin of bridge tunnel
- renewal of paint, if necessary.

9.10 PEOPLE LIFTS (ELEVATORS)

9.10.1 In general, lifts will be monitored by the safety authorities of the State or municipality. Maintenance responsibility of the building owner or operator is limited to observation of the lift's function and to cleaning. All other maintenance work, i.e. regular inspection, replacement of parts and repair, remains with the manufacturer. A complete overhaul of ropes, drives and other moving elements has to be carried out at least once a year. National safety regulations for lift manufacturers, however, should be consulted for the extent of maintenance and intervals between inspections.

9.11 PEOPLE MOVERS (ESCALATORS, ETC.)

9.11.1 In general, people movers will be monitored by the safety authorities of the State or municipality. Maintenance responsibility of the building owner or operator is limited to observation of the people movers' or escalators' proper function and to cleaning. All other maintenance works, i.e. regular inspection, replacement of parts and repair, remains mostly with the manufacturer. The operator can check movement and wear of guide rails, rollers, steps or lamellae, hand rails and refill lubrication pots. Complete overhaul of moving elements has to be carried out (by the manufacturer) at specified intervals. National safety regulations for manufacturers of such facilities should be consulted for the extent of maintenance and intervals between inspections.

9.11.2 No general guidance can be given on the maintenance of train-type people movers since they are complex systems which have to be operated in compliance with locally approved rules or technical requirements. The operator must, however, make provision for the daily checking of the emergency escape capability from the cabins.

9.12 FIXED FIRE PROTECTION INSTALLATIONS

9.12.1 Maintenance of fixed fire protection installations should include checking of:

Weekly:

- fire extinguishers within the whole building for integrity
- emergency exits for access clearance and removal of obstacles.

Quarterly:

- serviceability of all components of the fire warning and fire alarm system in the building.

Semi-annually:

- serviceability of fire doors designed to close automatically in case of fire or smoke
- serviceability of all fire extinguishers in the building.

Annually:

- functioning of smoke doors and flaps
- serviceability of emergency exit locks
- serviceability of pumps and fire hydrants
- hose condition.

Note.— *National rules for the provision and maintenance of fire protection installations have to be observed carefully.*

— END —

© ICAO 1984

ISBN 92-9194-157-3

Order No. 9137P9
Printed in ICAO



9