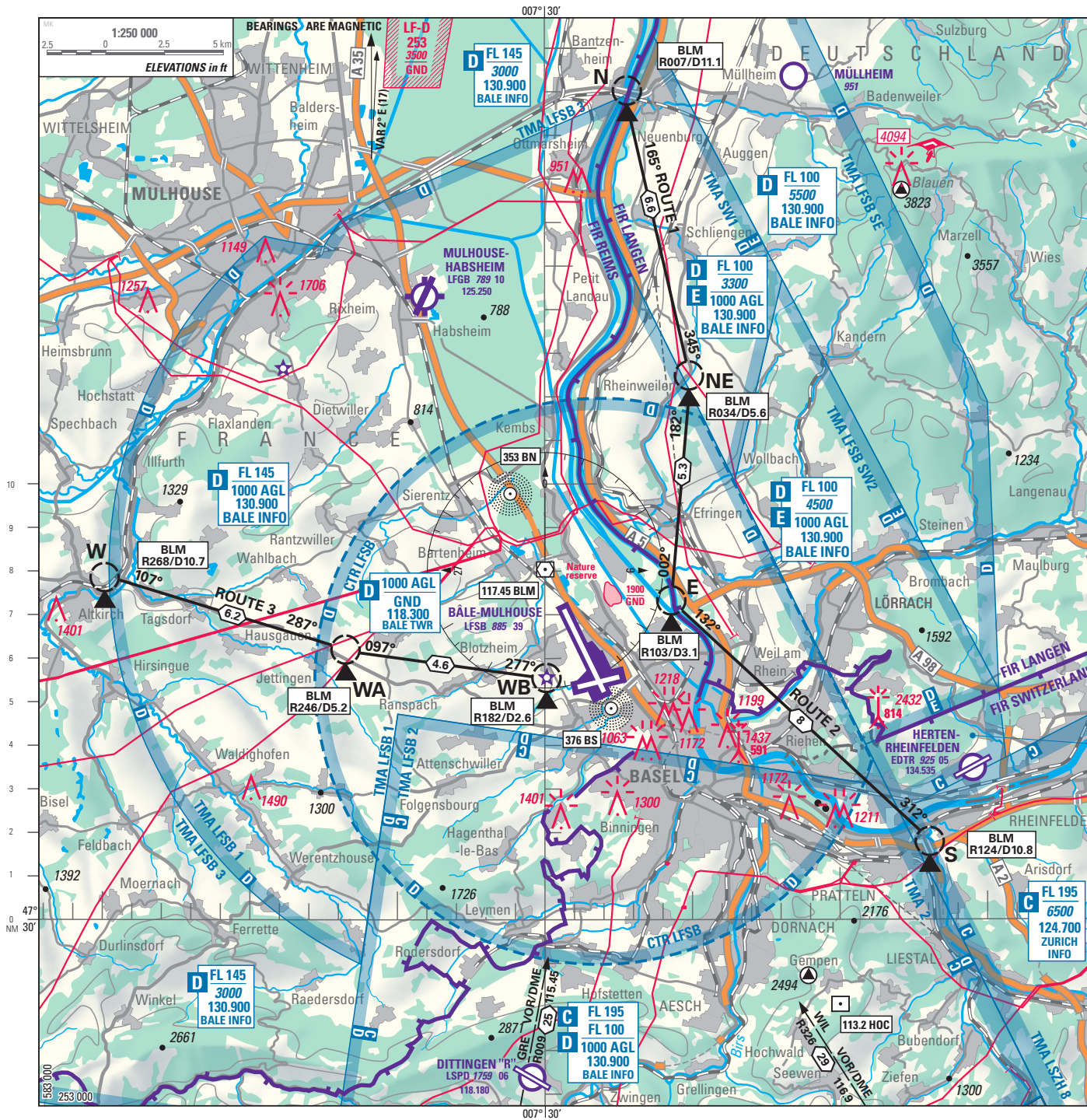


# BÂLE-MULHOUSE

VFR AREA CHART

ELEV 885 ft (270 m)

LFSB



ATIS	127.880	APP	119.355	130.900
			118.580	129.250
TWR	118.300	VDF	118.300	119.355
FIS	130.900	INFO		
FIS	134.680	TMAT1-T3		

**RWY 33 in use:**  
routing NR 3 W-WA-WB have to comply with use restrictions

**Arrival Procedures**  
RDO contact to enter the CTR will be established with BALE TWR 3 min before overflying the point N, S, W.  
ROUTE 1-3, except special ATC clearance

Establish radio contact at least 3 min prior reaching CTR limits.  
Enter CTR MAX 500 AGL

**Departure Procedures**  
ROUTE 1-3, except special ATC clearance  
After TKOF RWY 26, report over point WB, except otherwise ATC instructions

**Transit**  
First RDO contact with BALE TWR 3 MIN before first reporting point

**Preferred ALT for ARR, DEP and TRANSIT REP**  
→ AD INFO § 10 Local flying restrictions and remarks

**RDO failure procedure:** → LFSB AD INFO 7  
Special regulations for controle zone (CTR) § 2 Radio failure

Altitudes in ft; Heights in ft

**C FL 105**  
6500  
130.900  
BALE INFO

Aeronautical information for territories outside of Switzerland are published with reservation.

COR: TRA radial removed, GRE radial added

ALT for AIRCRAFT (ALT for HELICOPTER)				
REP	Preferred ALT			
	ARR	DEP	TRANSIT	
E	2500 (1400)	2200 (1400)	2500 (2500)	
N	2500 (2500)	2200 (2200)	2500 (2500)	
NE	2500 (2500)	2200 (2200)	2500 (2500)	
S	3000 (3000)	2500 (2500)	3000 (3000)	
W	3000 (3000)	2500 (2500)	3000 (3000)	
WA	3000 (3000)	2500 (2500)	3000 (3000)	
WB	1900 (1400)	1900 (1400)	2500 (2500)	