

SERVICE BULLETIN

SERVICE BULLETIN NO: 28-009

REF NO: IMCL

MODIFICATION NO:

ATA CHAPTER: 28

ENGINE FUEL AND CONTROL - DISTRIBUTION ENGINE-DRIVEN FUEL PUMP - TORQUE CHECK OF RELIEF-VALVE-BODY SCREWS

1. Planning Information

A. Effectivity

All PC-12 and PC-12/45 aircraft from MSN 101 thru MSN 400 with Engine Driven Pump (EDP) Vendor Part Number RG9570R1, PILATUS Part Number 968.84.51.106 installed.

All EDPs with Vendor Part Number RG9570R1, PILATUS Part Number 968.84.51.106 held as spare.

Incorporation of this Service Bulletin is not necessary on EDPs with vendor Part Number RG95701R1/M, PILATUS Part Number 968.84.51.106/M.

B. Concurrent Requirements

None.

C. Reason

(1) Problem

Fuel leakage through the gasket of the EDP relief valve.

(2) Cause

It is possible the torque of the screws that attach the EDP relief-valve cover to the relief valve housing is not correct. It is also possible that the gasket between the EDP relief-valve housing and the EDP housing has been pushed out.

(3) Solution

Do a check of the torque value of the EDP relief-valve-cover screws, inspect the EDP and replace if necessary.

D. Description

This Service Bulletin gives the data and instructions to do:

- A check of the EDP relief valve for fuel leakage and gasket material pushed out
- A check of the torque of the screws that attach the EDP relief-valve-cover to the relief valve housing.

≡PILATUS≡
PCI2
SERVICE BULLETIN

E. Compliance

Mandatory.

Must be incorporated within the next 20 hours time-in-service (TIS) or 30 days after the effective date of this Service Bulletin whichever comes first.

F. Approval

The technical aspects of this Service Bulletin are approved by the Federal Office for Civil Aviation (FOCA) of Switzerland as an Airworthiness Directive.

NOTE: PILATUS advises Operators/Owners to check with their local Airworthiness Authorities for any changes, local regulations or sanctions that can affect the embodiment of this Service Bulletin.

G. Manpower

	Total	Total
Preparation	0.25	0.25
Torque Check (without EDP removal)	1.00	
Torque Check (with EDP removed)		1.50
Close up	0.25	0.25
TOTAL MAN-HOURS	1.50	2.00

NOTE: Man-hours figures do not include the time required to cure sealants and adhesives.

H. Weight and Balance

(1) Weight Change

Not affected.

(2) Moment Change

Not affected.

I. Electrical Load Data

Not changed.

J. Software

Not changed.

K. References

Aircraft Maintenance Manual (AMM), 06-20-00 and 28-20-03.

L. Publications Affected

Illustrated Parts Catalog (IPC), 73-10-00.

PILATUS
PC12
SERVICE BULLETIN

M. Interchangeability of Parts

Do not install an EDP PILATUS Part Number 968.84.51.106.

2. Material Information

A. Material - Price and Availability

If applicable, Operators should send orders for EDPs, to their Authorized Pilatus Service Center, or to:

PILATUS AIRCRAFT LTD.,
CUSTOMER LIAISON MANAGER,
CH-6371 STANS,
SWITZERLAND

General Aviation:
Tel : + 41 41 619 6319
Fax: + 41 41 619 6224
eMail: pilga@pilatus-aircraft.com

Government:
Tel : + 41 41 619 6509
Fax. + 41 41 619 6224
eMail: rpaterson@pilatus-aircraft.com

PILATUS BUSINESS AIRCRAFT LTD.,
PRODUCT SUPPORT DEPARTMENT
11755 AIRPORT WAY
BROOMFIELD, CO 80021.
UNITED STATES OF AMERICA

Tel : 303 465 9099
Fax: 303 465 6040
eMail: Productsupport@PilBal.com

PILATUS AUSTRALIA (Pty.) LTD.,
PO BOX 732
MARLESTON SA 5033
AUSTRALIA

Tel : (08) 8234 4433
Fax: (08) 8234 4499
Free Call: 1800 445 007
eMail: info@pilatus.com.au

NOTE: Operators are requested to advise Pilatus Aircraft Ltd, of the Manufacturer's Serial Number (MSN) and the flying hours of aircraft which are affected by this Service Bulletin.

B. Material Necessary for Each Aircraft

(1) Material to be Procured

Not applicable.

(2) Additional Material to be Procured

These items are necessary only if you remove the EDP:

New Part No.	Description	Old Part No.	Qty	Disp. Code	Fig	Item
946.91.27.212	Packing, Preformed	946.91.27.212	2	D	-	-
968.20.11.687	Gasket	968.20.11.687	1	D	-	-

Disposition Codes: D - Discard / R - Return to Pilatus

PILATUS
PCI2
SERVICE BULLETIN

(3) Operator Supplied Materials

Part No.	Description	Qty	Remarks
919.01.11.104	Lockwire 0.032 in. (0,8 mm) dia.	A/R	Relief-Valve-Cover Screws (Material Item P02-001)
919.01.11.103	Lockwire 0.025 in. (0,6 mm) dia.	A/R	EDP Housing Bolts (Material Item P02-007)

3. Accomplishment Instructions - Aircraft

A. Preparation

- (1) Open engine cowling 43AR (Ref. AMM, 06-20-00, Page Block 1).

B. Inspection and Torque Check of the EDP Relief Valve (Ref. Fig. 1)

- (1) Do an inspection of the joints between the EDP housing, relief valve housing and the relief valve cover for:

- Fuel leakage
- Gasket material pushed out

- (2) If you find signs of fuel leakage or the gasket between the EDP housing or the relief valve housing has been pushed out:

- Remove the EDP (Ref. AMM, 28-20-03, Page Block 401)
- Send the EDP to Lear Romec at the following address for modification:

Mr. T Chapman,
Lear Romec,
241 South Abbe Road,
Elyria,
Ohio 44036,
USA.

Tel. 001 440 323 3211
Fax. 001 440 323 5185

- (3) Use a torque screwdriver to do a check of the torque value of the relief-valve-cover screws. Do the check clockwise only. The minimum torque value must be 23 lbf in. (2,6 Nm).

NOTE: It is not necessary to remove the lockwire from the screws to do the torque check.

- (4) If the torque found at Step (3) is more than 23 lbf in. (2,6 Nm), it is not necessary to loosen the screws and torque them again.

- (5) If the relief-valve-cover screws are loose, or the torque found at Step (3) is less than 23 lbf in. (2,6 Nm), do as follows:

- (a) Cut, remove and discard the lockwire that safeties the relief-valve-cover screws.
- (b) Torque the screws gradually to between 23 and 25 lbf in. (2,6 and 2,83 Nm). Do this in the sequence shown in Figure 1, Detail B.

≡PILATUS≡
PC12
SERVICE BULLETIN

(c) Safety the screws with lockwire (Material Item P02-001).

(6) If you cannot get access to do the torque check with the EDP installed:

- Remove the EDP (Ref. AMM, 28-20-03, Page Block 401)
- Do Steps (1) thru (5)
- Install the EDP if serviceable (Ref. AMM, 28-20-03, Page Block 401).

C. Close up

(1) Close engine cowling 43AR (Ref. AMM, 06-20-00, Page Block 1).

(2) Remove all tools and materials. Make sure the work areas are clean.

D. Documentation

(1) Make an entry in the Aircraft Logbook that this Service Bulletin has been incorporated.

4. Accomplishment Instructions - Spares

A. Modification of the EDP

(1) Do an inspection of the joints between the EDP housing, relief valve housing and the relief valve cover for signs of gasket material pushed out.

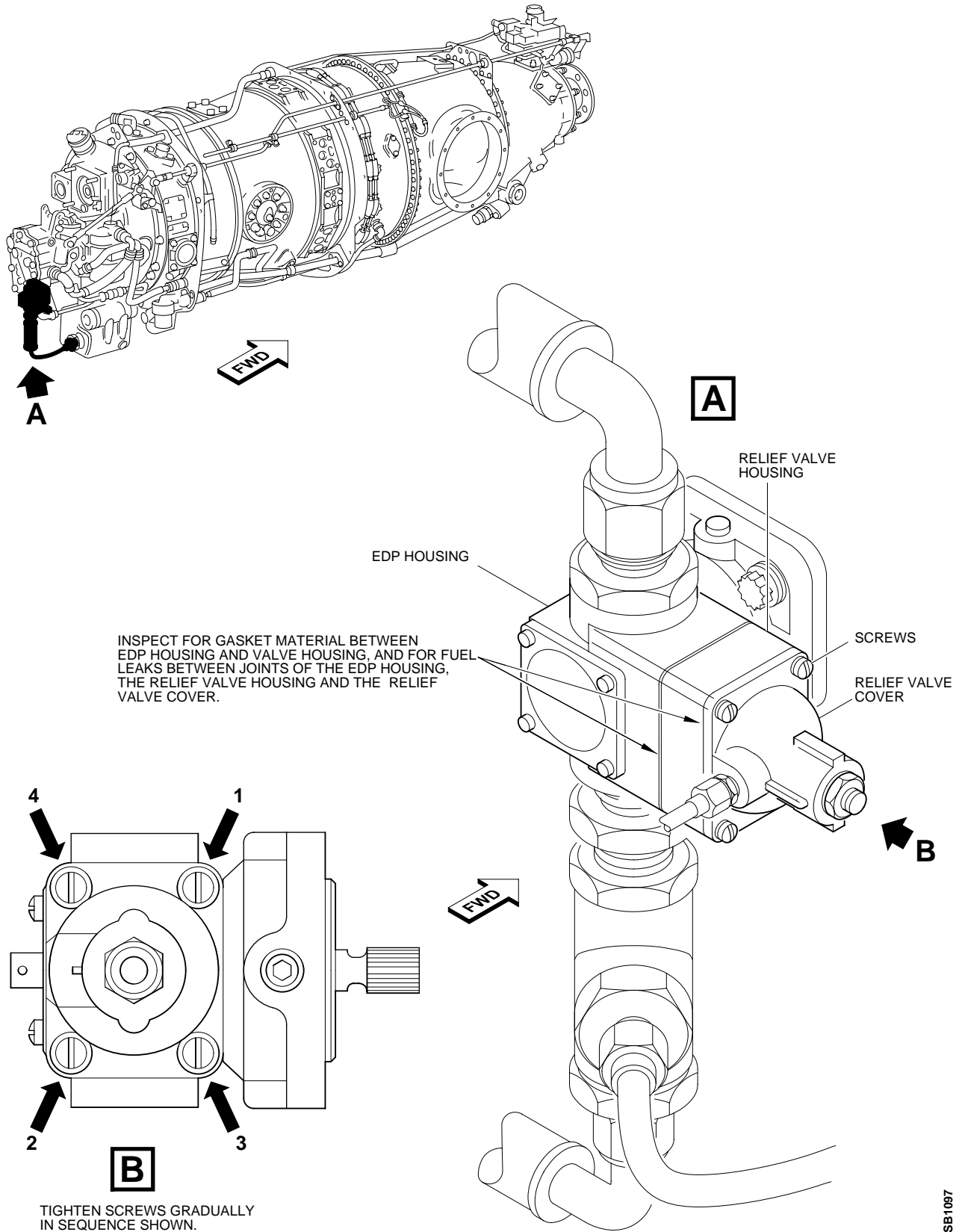
(2) If you find signs of the gasket material between the EDP housing or the relief valve housing has been pushed out send the EDP to Lear Romec for modification (Ref. Sect 3, Para B, Step (2)).

(3) If there are no signs of the gasket material pushed out do the torque check (Ref. Sect 3, Para B, Steps (3) thru (5)).

B. Documentation

(1) Make an entry in the spare parts inventory list that this modification has been incorporated.

PILATUS
PC12
SERVICE BULLETIN



Torque Check and Fuel Leak Inspection of the EDP
Figure 1