

SERVICE BULLETIN

Service Bulletin Number: SB05147

Revision:

B

New release
 A: Added reference "note" to instructions. Added figures 2 and 3.
 B: Replaced photos figure 2 and 3 with illustration figure 2. Revised A(6) and B(6) to refer to figure 2. Deleted A(7) and B(7) requiring DASC completion form

Page: 1

TITLE: LEG REPLACEMENT

PLANNING INFORMATION

The following seats are affected by this service bulletin. The customer is Pilatus. No spares are affected by this service bulletin.

SERIAL NUMBER	MODEL NUMBER	PART NUMBER	SERIAL NUMBER	MODEL NUMBER	PART NUMBER
28587	4006	403150-1-ACE	29050	4006	403150-1-E
28588	4006	403150-2-ACE	29051	4006	403150-2-E
28593	4006	403150-1-D-E	29057	4006	403150-1-E
28594	4006	403150-2-D-E	29058	4006	403150-2-E
28645	4006	403150-1-D-E	29166	4006	403150-1-D-E
28646	4006	403150-2-D-E	29167	4006	403150-2-D-E
28653	4006	403150-1-D-E	29180	4006	403150-1-E
28654	4006	403150-2-D-E	29181	4006	403150-2-E
28676	4006	403150-1-D-E	29186	4006	403150-1-E
28677	4006	403150-2-D-E	29187	4006	403150-2-E
28682	4006	403150-1-ACE	29212	4006	403150-1-CE
28683	4006	403150-2-ACE	29213	4006	403150-2-CE
28716	4006	403150-1-ADE	29254	4006	403150-1-E
28717	4006	403150-2-ADE	29255	4006	403150-2-E
28768	4006	403150-1-E	29271	4006	403150-1-ABCDE
28769	4006	403150-2-E	29289	4006	403150-1-E
28780	4006	403150-1-E	29290	4006	403150-2-E
28781	4006	403150-2-E	29373	4006	403150-1-D-E
28828	4006	403150-1-ACDE	29374	4006	403150-2-D-E
28829	4006	403150-2-ACDE	29415	4006	403150-1
28847	4006	403150-1-E	29416	4006	403150-2
28848	4006	403150-2-E	29421	4006	403150-1-D-E
29008	4006	403150-1	29422	4006	403150-2-D-E
29009	4006	403150-2	29457	4006	403150-1-E
29024	4006	403150-1-E	29458	4006	403150-2-E

Table continues on the next page.

Service Bulletin:	SB05147
Revision:	B
Page:	2 of 5

SERIAL NUMBER	MODEL NUMBER	PART NUMBER	SERIAL NUMBER	MODEL NUMBER	PART NUMBER
29025	4006	403150-2-E	29478	4006	403150-1-E
29479	4006	403150-2-E	29643	4006	403150-2-D-E
29634	4006	403150-1-D-E	29722	4006	403150-1-E
29635	4006	403150-2-D-E	29723	4006	403150-2-E
29642	4006	403150-1-D-E			

REASON

The lot of material used to manufacture the forward pedestal legs are suspect. Replacement ensures the seat meets the approved data package.

DESCRIPTION

This service bulletin incorporates a pedestal leg replacement. Replacement is **mandatory** and must be completed within one year of the date of this Service Bulletin.

APPROVAL

This service bulletin must be approved by the aircraft type design holder before incorporation.

MANPOWER

Estimate of Man-Hours	1 hour per seat
Personnel	1
<i>This estimate is based upon experienced, properly equipped, personnel complying with this service bulletin.</i>	

PARTS REQUIRED

431005-17	Pedestal leg	Qty 1 per seat
431005-18	Pedestal leg	Qty 1 per seat

PARTS AVAILABILITY

The parts are available from DeCrane Aircraft Seating Company, Inc.

ELECTRICAL LOAD DATA

Electrical load data is not affected by this Service Bulletin.

SOFTWARE ACCOMPLISHMENT SUMMARY

Software accomplishment is not affected by this Service Bulletin.

REFERENCES

Drawings	CMM	Vendor Service Bulletin	Comments
-	25-20-7	-	-

PUBLICATIONS AFFECTED

No publications are affected by this Service Bulletin.

Service Bulletin:	SB05147
Revision:	B
Page:	3 of 5

INTERCHANGEABILITY OF PARTS

No substitutions are permitted except hardware alternates where noted.

WARRANTY CREDIT

Warranty credit applies for parts and labor.

ACCOMPLISHMENT INSTRUCTIONS

(See Fig 1)

A. LH Aft Facing Seats

1. Remove bolts (70), (130), (180), washers (90), (150), (200), nuts (80), (140), (190) and remove gusset (160).
2. Remove and discard leg (110) and install leg 431005-17.
3. Reinstall hardware removed in steps 1 & 2 in reverse order of removal.
4. Remove bolts (220), (280), (330), washers (240), (300), (350), nuts (230), (290), (340) and gusset (310).
5. Remove and discard leg (260) and install leg 431005-18.
6. *Reinstall hardware removed in steps 4 & 5 in reverse order of removal.

***NOTE:** See Figure 2. Remove the pedestal shroud. Examine the two solid aluminum legs that are in the forward position relative to the aircraft. The legs are installed **CORRECTLY** if the length of the slot on the top of the leg is *shorter on the forward side* as compared to the length of the slot on the aft side of the leg. The legs are installed **INCORRECTLY** if the length of the slot on the top of the leg is *longer on the forward side* as compared to the length of the slot on the aft side of the leg.

B. RH Aft Facing Seats

1. Remove bolts (70), (130), (180), washers (90), (150), (200), nuts (80), (140), (190) and remove gusset (160).
2. Remove and discard leg (110) and install leg 431005-18.
3. Reinstall hardware removed in steps 1 & 2 in reverse order of removal.
4. Remove bolts (220), (280), (330), washers (240), (300), (350), nuts (230), (290), (340) and gusset (310).
5. Remove and discard leg (260) and install leg 431005-17.
6. *Reinstall hardware removed in steps 4 & 5 in reverse order of removal.

***NOTE:** See Figure 2. Remove the pedestal shroud. Examine the two solid aluminum legs that are in the forward position relative to the aircraft. The legs are installed **CORRECTLY** if the length of the slot on the top of the leg is *shorter on the forward side* as compared to the length of the slot on the aft side of the leg. The legs are installed **INCORRECTLY** if the length of the slot on the top of the leg is *longer on the forward side* as compared to the length of the slot on the aft side of the leg.

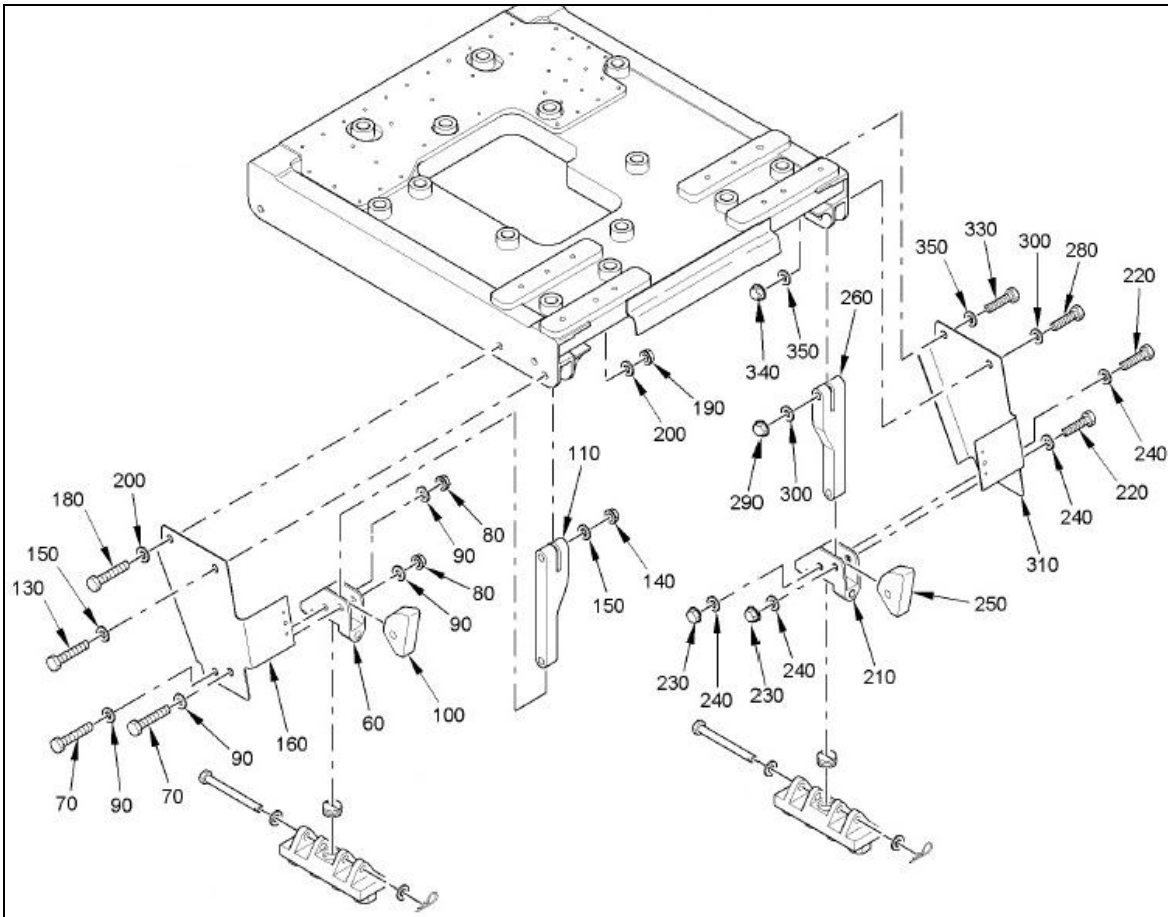


Fig 1 Leg Replacement

Best quality aircraft shop practices, such as those described in FAA AC43.13-1B, “*Acceptable Methods, Techniques, and Practices – Aircraft Inspection and Repair*”, are to be used in making the modification.

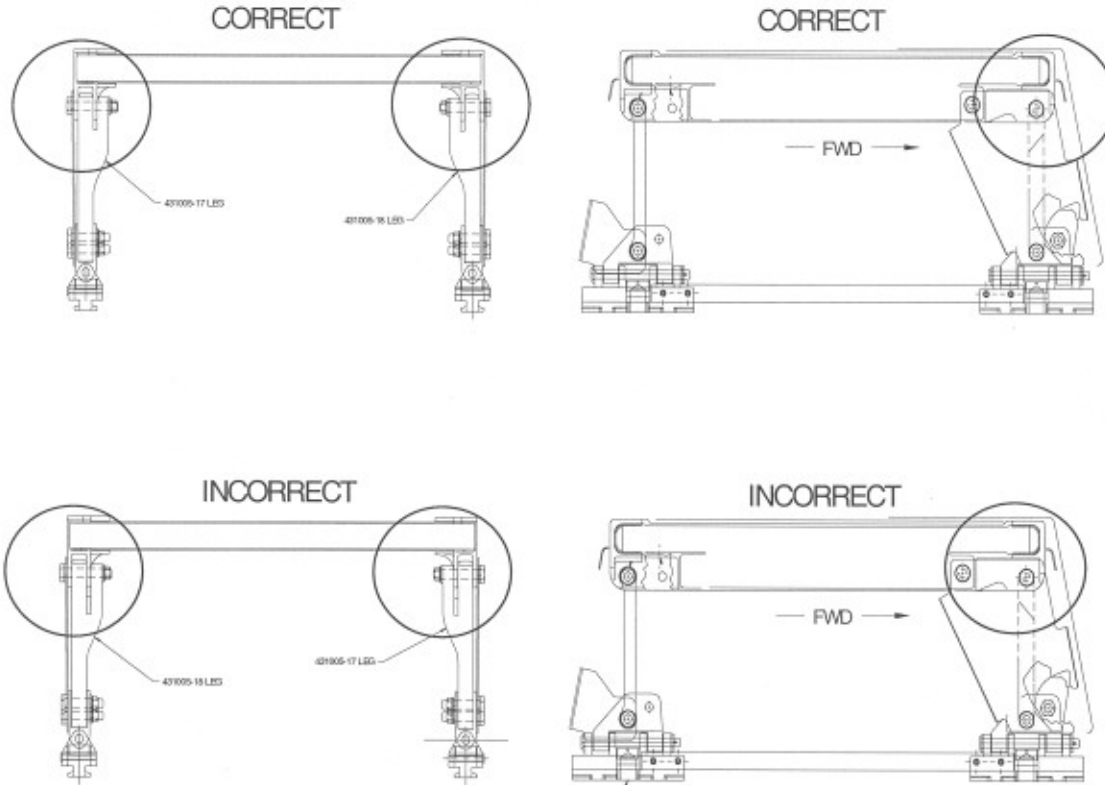


Fig 2 Leg Orientation

The upper pictures show the correct leg installation. The lower pictures show the incorrect installation which can be identified by the long side of the slot facing away from the seat.

RECORD OF COMPLIANCE

1. Record compliance with this service bulletin by applying a modification tag (p/n 302075-9) adjacent to the seat identification tag.
2. The customer's maintenance or quality assurance staff shall make an appropriate maintenance record entry to comply with airworthiness authority requirements.

Prepared by: A. E. Borkovec
A.E. Borkovec
Certification

Date: 26-June-06

Approved by: K. J. Walsh
K. J. Walsh
VP - Regulatory Compliance

Date: 26-Jun-06