

SERVICE BULLETIN

Mandatory

Page 1 of 7

VERTICAL STABILIZER RIB 1

1. Planning Information

1.1 Effectivity

- Models: AS 202/15, AS 202/15-1
AS 202/18, AS 202/18-1
AS 202/18-2, AS 202/18-3
- Ser. Nos. S/N 001 to 223

1.2 Reason: Cracks in Rib 1 at the joint angle attachment of vertical stabilizer

1.3 Description: Reinforcement of Rib 1 with bracket and filler plate

1.4 Compliance: At next 50 hours inspection

1.5 Approval: Approved by the Swiss Federal Air Office as an Airworthiness Directive

1.6 Manpower: Approx. 10 man-hours

1.7 Material: Available from FFA

1.8 Tooling: Tools for riveting required

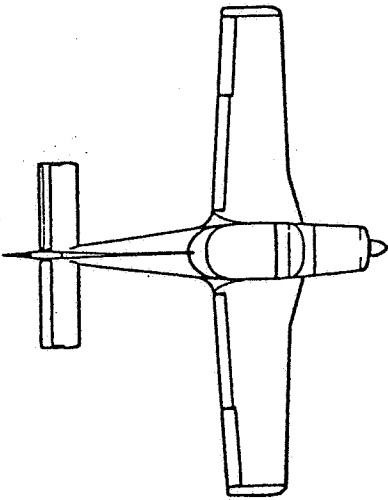
1.9 Weight and Balance: not affected

1.10 Electrical load data: not affected

1.11 Reference to other publications: IPC, chapters
55-30-01, 55-30-02, 55-50-02,
53-30-01, 27-20-02, 53-50-01,
27-20-00

SERVICE BULLETIN

Page 2 of 7



2. Accomplishment Instructions

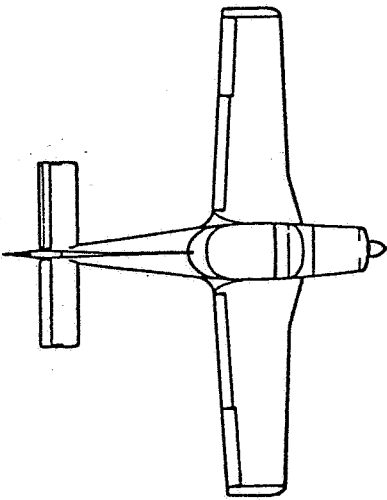
2.1 Remove

- Remove left cover 202-17.505.11 and right cover 202-17.505.12 on the rear of the fuselage (S/N 136 and higher: 202-17.603.11 and 202-17.603.12)
- Remove bottom cover 202-11.150.24 on the rear of the fuselage
- Disconnect the rudder steering cables from the rudder bell-crank
- Remove the rudder
- Remove the dorsal fin
- Remove the vertical stabilizer structure

2.2 Installation

- Drill out carefully the riveting on rib 1, on the skin and on the spar
- Remove rib 1 from vertical stabilizer structure
- Drill out carefully the riveting on the joint angle
- Remove the joint angle from rib 1
- Check rib 1 for cracks on the forward attachment. If cracks exist, drill end of the cracks with diameter 0.1" (2,5 mm) hole. If cracks as shown in Fig. 2, exceed 1 3/4" (44 mm), rib should be replaced.
- Install the bracket (Item 1) and filler plate (Item 2) with old joint angle on the rib 1. Riveting in accordance with Fig. 2, page 6
- Install the rib 1 in the vertical stabilizer structure. Riveting on the skin and on the spar in accordance with Fig. 2,3, page 6 and 7

SERVICE BULLETIN



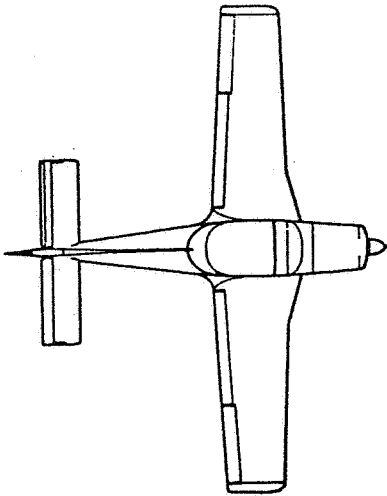
- Install new rubber channel (Item 7), bonded to the lower skin edge
- Install the vertical stabilizer structure, use new locking plate (8,4 DIN 93) Item 6
- Install the dorsal fin
- Install the rudder
- Install the rudder steering cables on the rudder bell-crank
- Install bottom cover on the rear of the fuselage
- Install left cover and right cover on the rear of the fuselage
- Rigging of the rudder cables in accordance with AMM/IPC 27-20-00 Page 202

2.3 Test

- Check the rudder deflection:
to left and right: $28^{\circ} \pm 1^{\circ}$

The accomplishment of this Service Bulletin should be recorded in the technical document of the airplane.

SERVICE BULLETIN

3. Material

Item	Description	Part No	Units/Assy
1	Bracket for S/N 001 - 135 :	202-17.526	1
	for S/N 136 - 223 :	202-17.527	1
2	Filler plate	202-17.648	1
3	Bolt, hexagonal head	AN3-5A	2
4	Washer	AN960 PD10	2
5	Nut, self-locking	MS 21042-3	2
6	Plate, locking	8,4 DIN 93	1
7	Channel, rubber	202-17.525	2
-	Rivet, roundhead	MS 20470 AD4-4	14
-	Rivet, roundhead	MS 20470 AD4-4,5	6
-	Rivet, roundhead	MS 20470 AD 4-5	6
-	Rivet, roundhead	MS 20470 AD 4-6	4
-	Rivet, roundhead	MS 20470 AD 5-7	2
-	Rivet, roundhead	MS 20470 AD 5-9	3
-	Rivet, countersunk	MS 20426 AD 3-4	12
-	Rivet, countersunk	MS 20426 AD 4-4,5	8

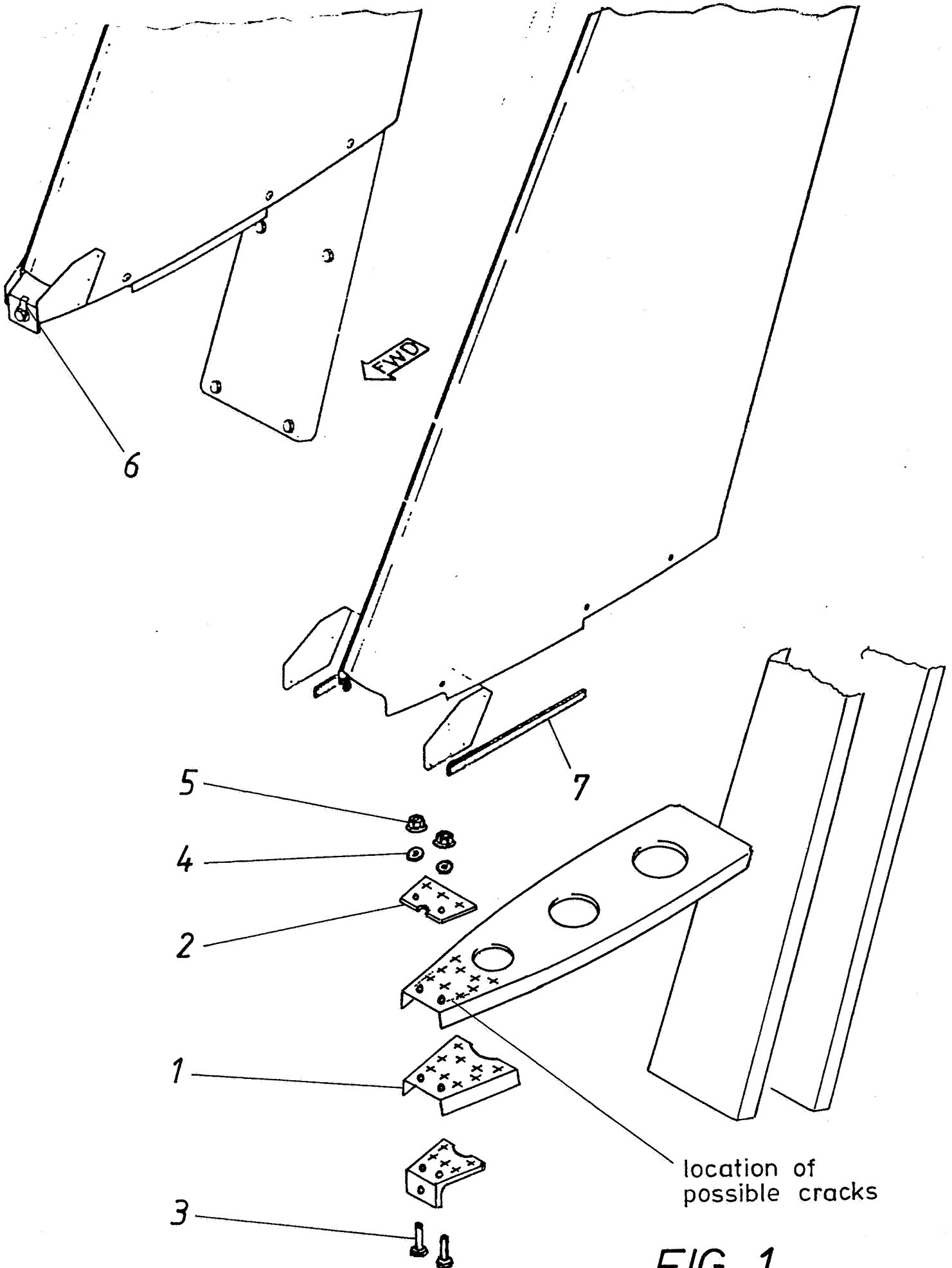


FIG. 1

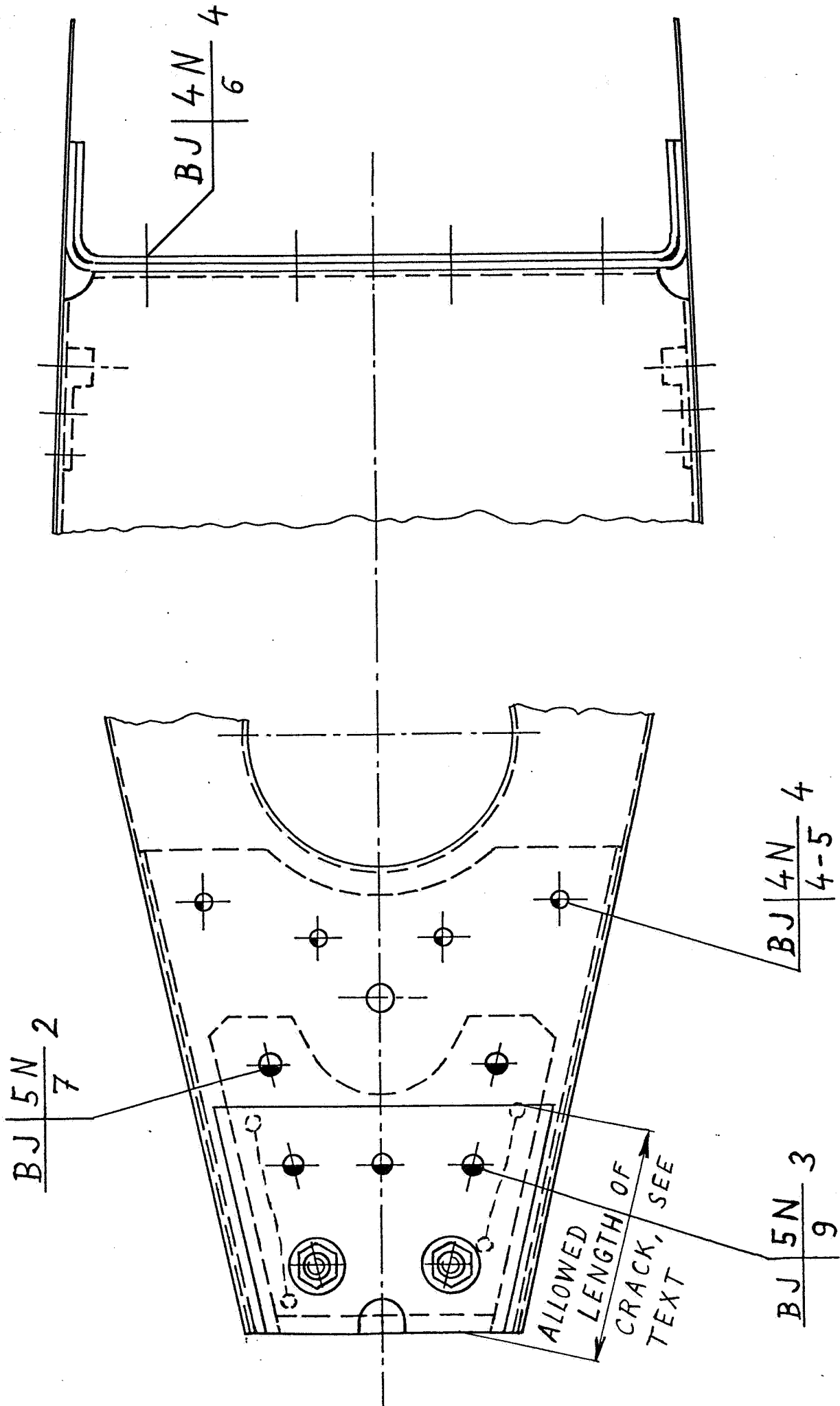


FIG. 2

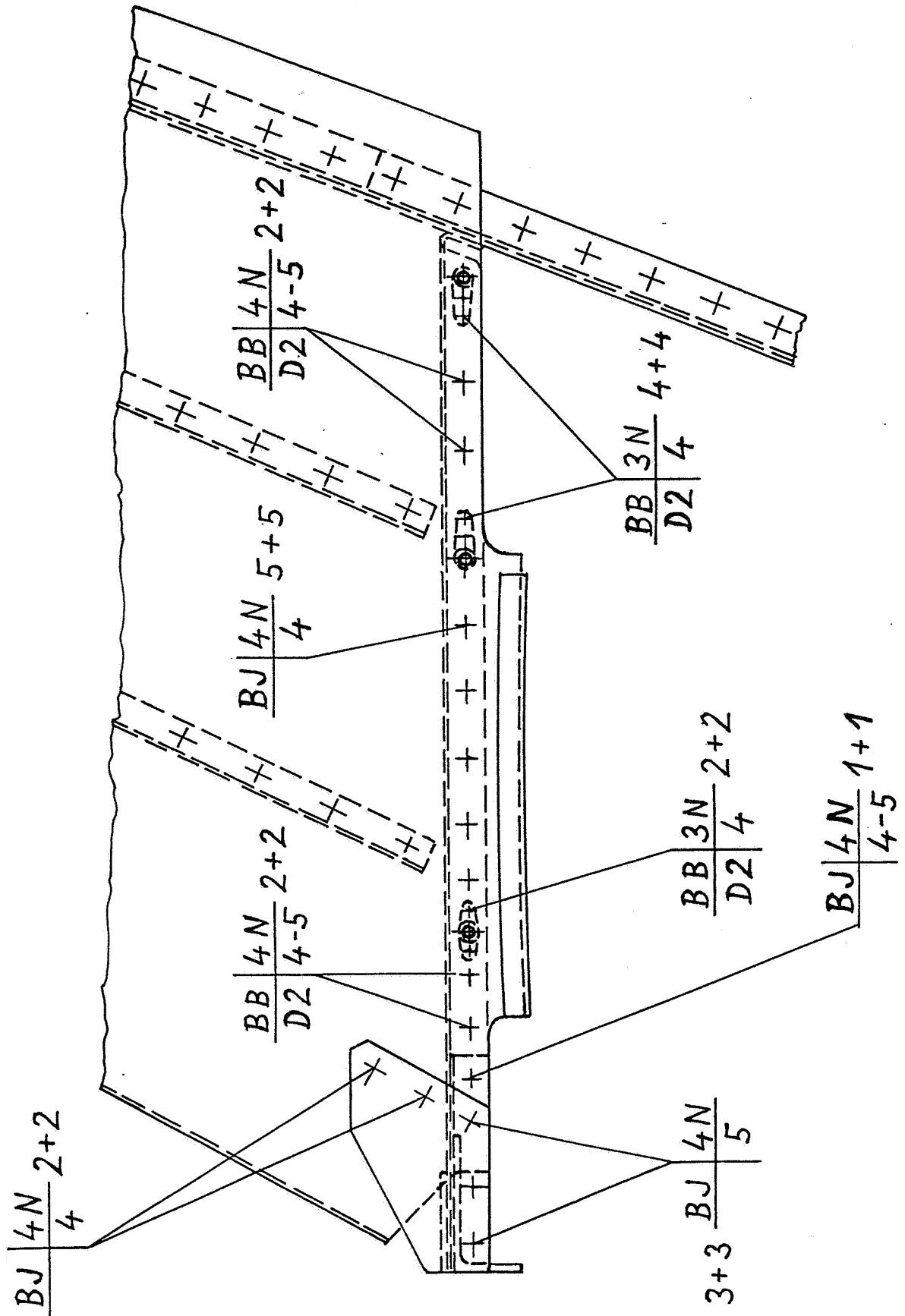


FIG. 3