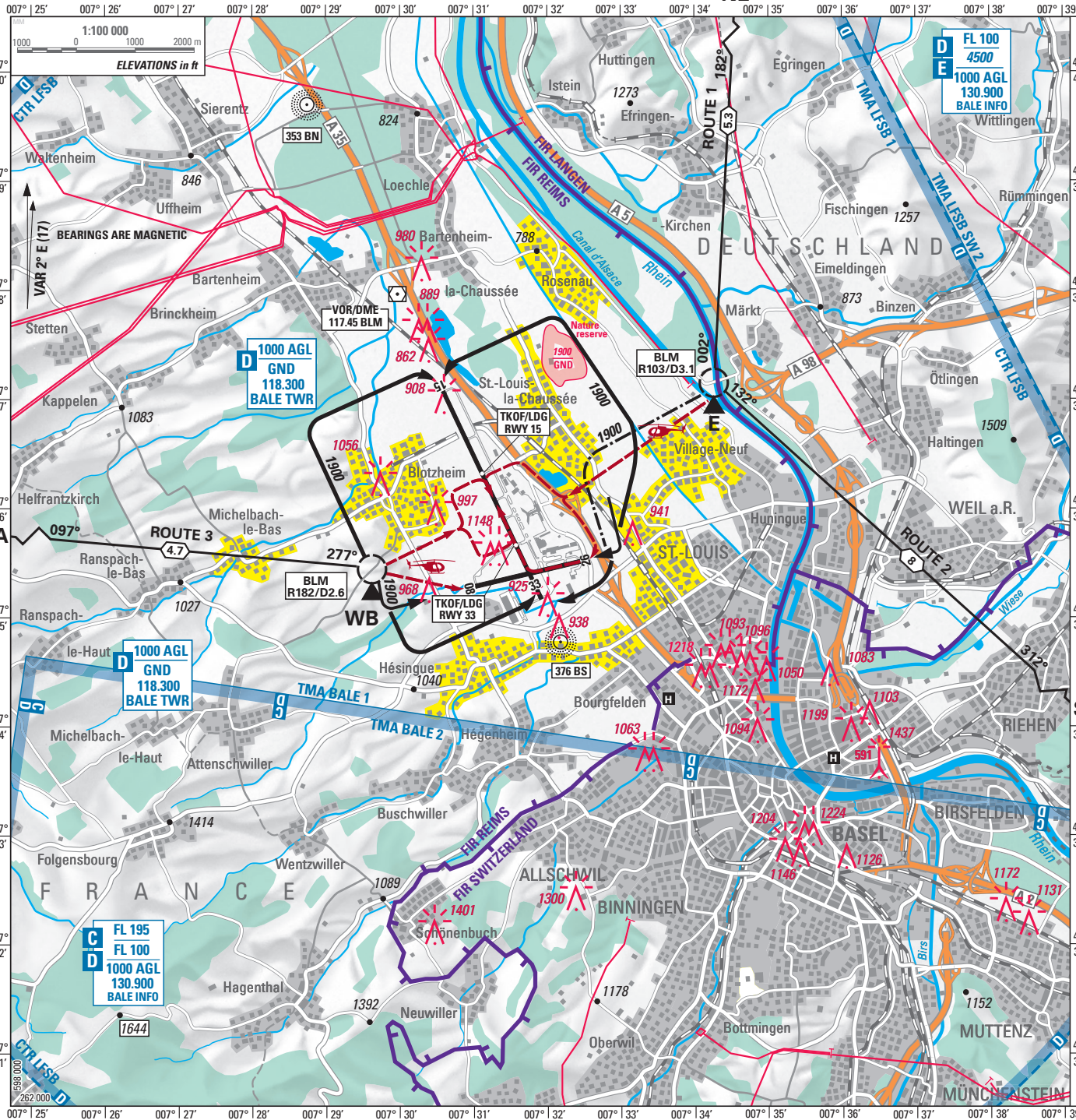


VISUAL APPROACH CHART

ELEV 885 ft (270 m)

NE



ATIS	127.880	VDF	118.300	119.355
TWR	118.300	INFO	130.900	
APP	119.355	130.900	118.580	129.250
GND	121.605	CLR DEL	121.955	

- ARR ACFT REP E RWY 33
- Noise sensitive areas
- Use RWY and TWY only
- HEL MAX 500 AGL within CTR
- RDO failure procedure:** → LFSB AD INFO 7
Special regulations for controle zone (CTR) § 2 Radio failure

Altitudes in ft; Heights in ft

Aeronautical information for territories outside of Switzerland are published with reservation.

COR: FREQ changed, OBST, Situation